

421 WATSON STREET

Proposed Renovation



Brush Park Community Development Corporation
Community Meeting
May 19, 2020



Midtown

Cass Corridor

421 Watson

Brush Park

ACD

2



ACD

3



421 Watson

ACD

4



Proposed
Scope of Work

- New windows and doors
- New roof
- New utilities
- Repair masonry

ACD





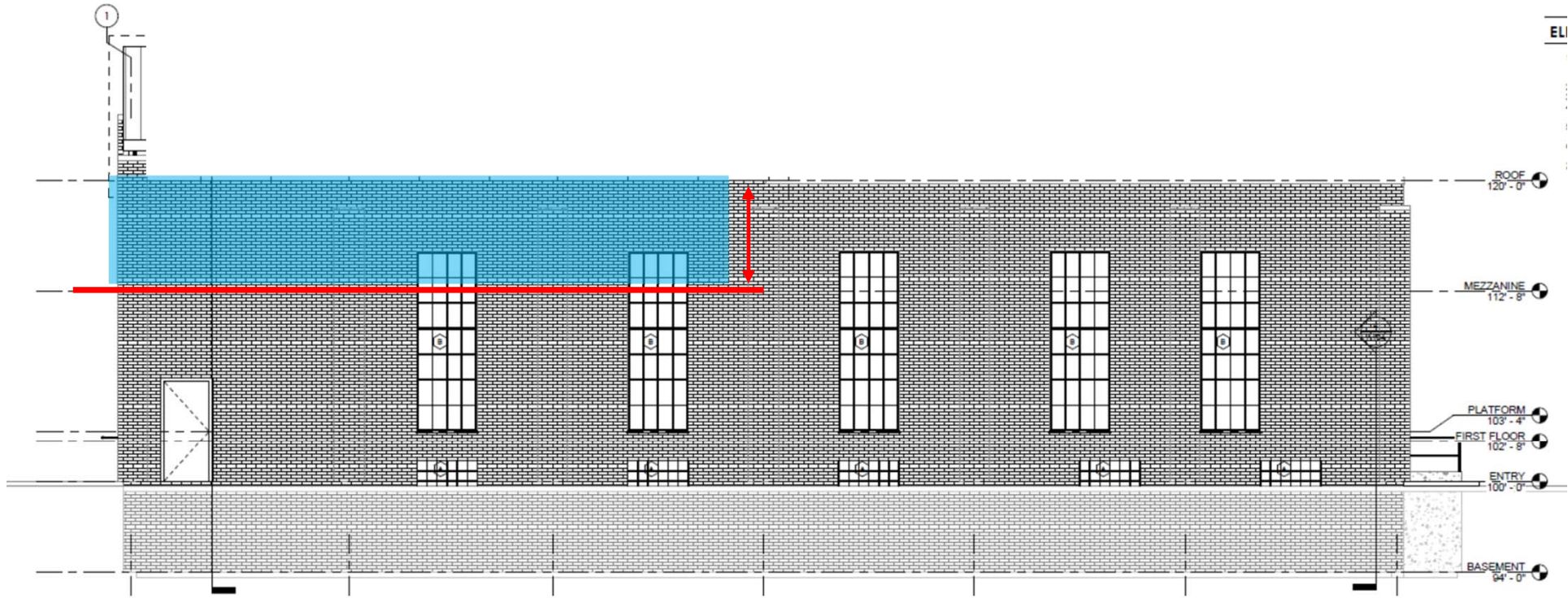




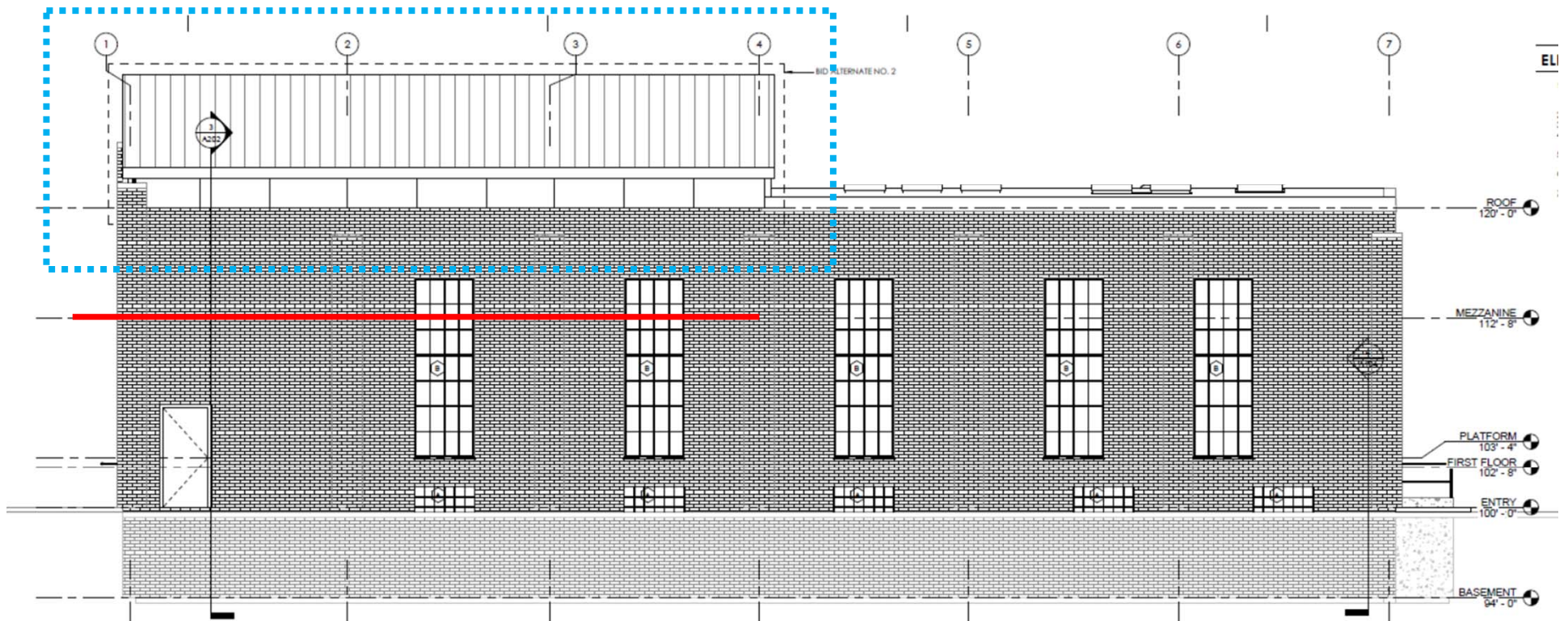
ACD



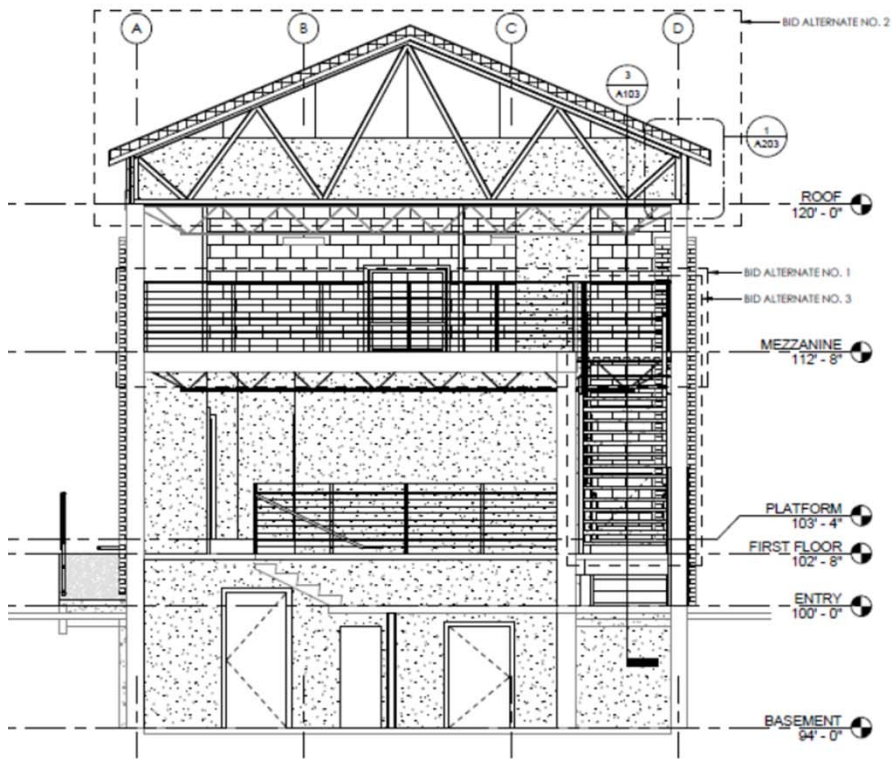
ACD



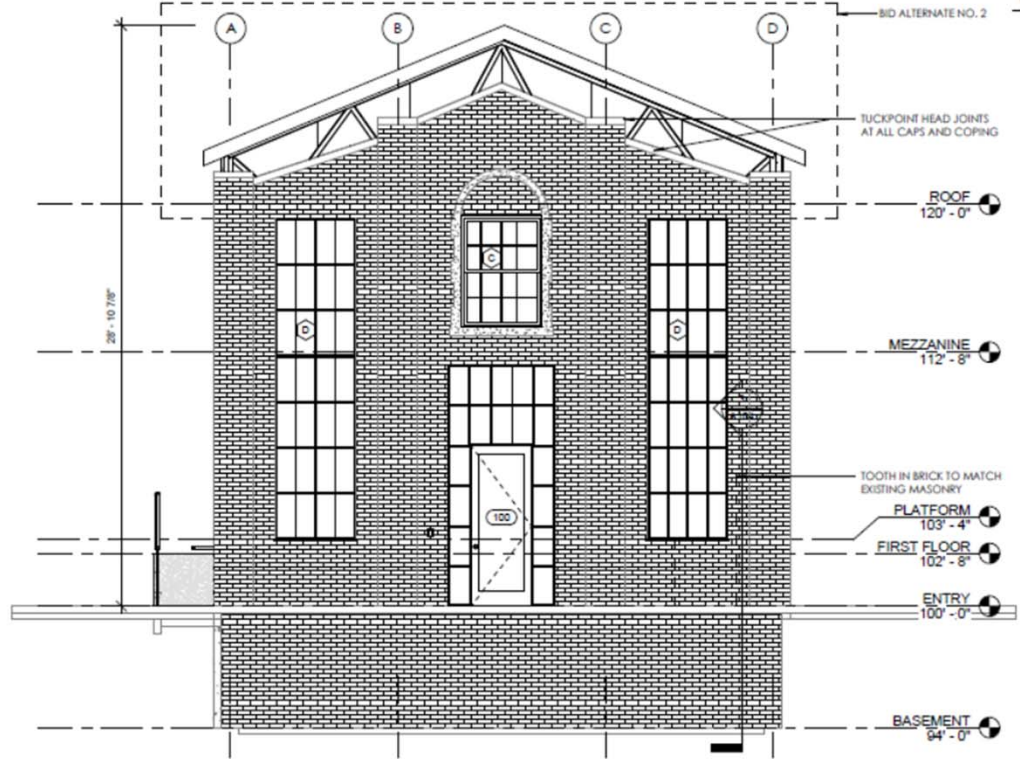
1 EAST ELEVATION
A101 1/4" = 1'-0"



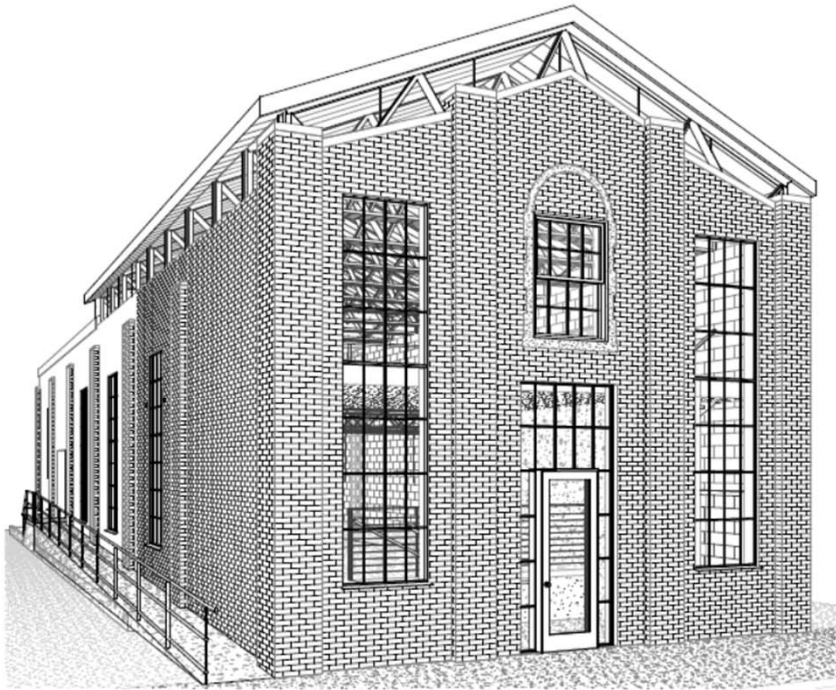
1 EAST ELEVATION
A101 1/4"=1'-0"



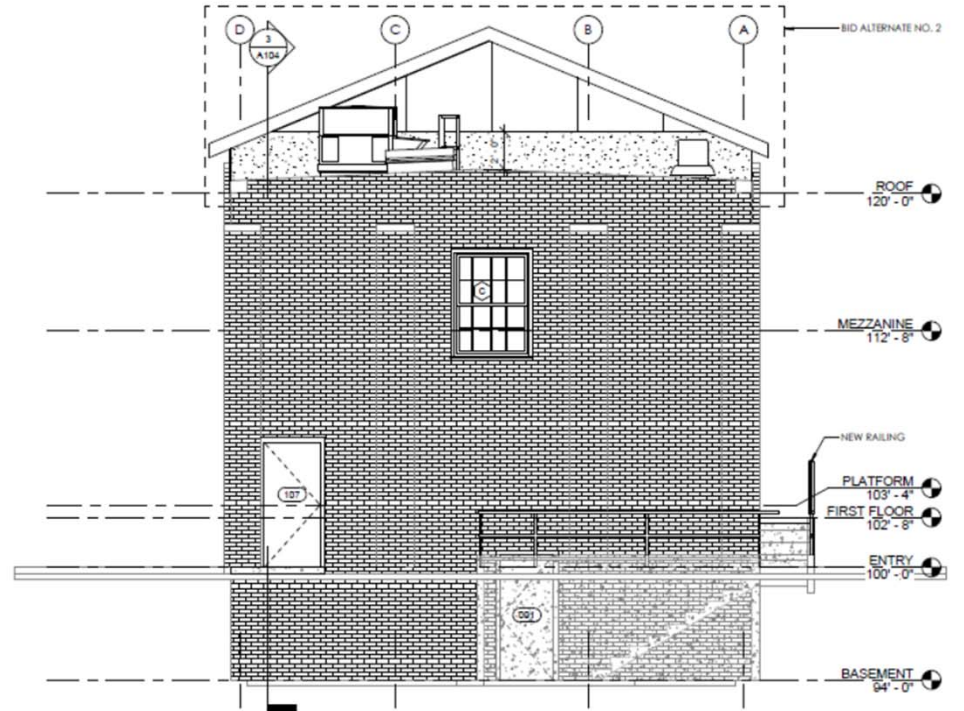
3 SECTION A
A101 1/4" = 1'-0"



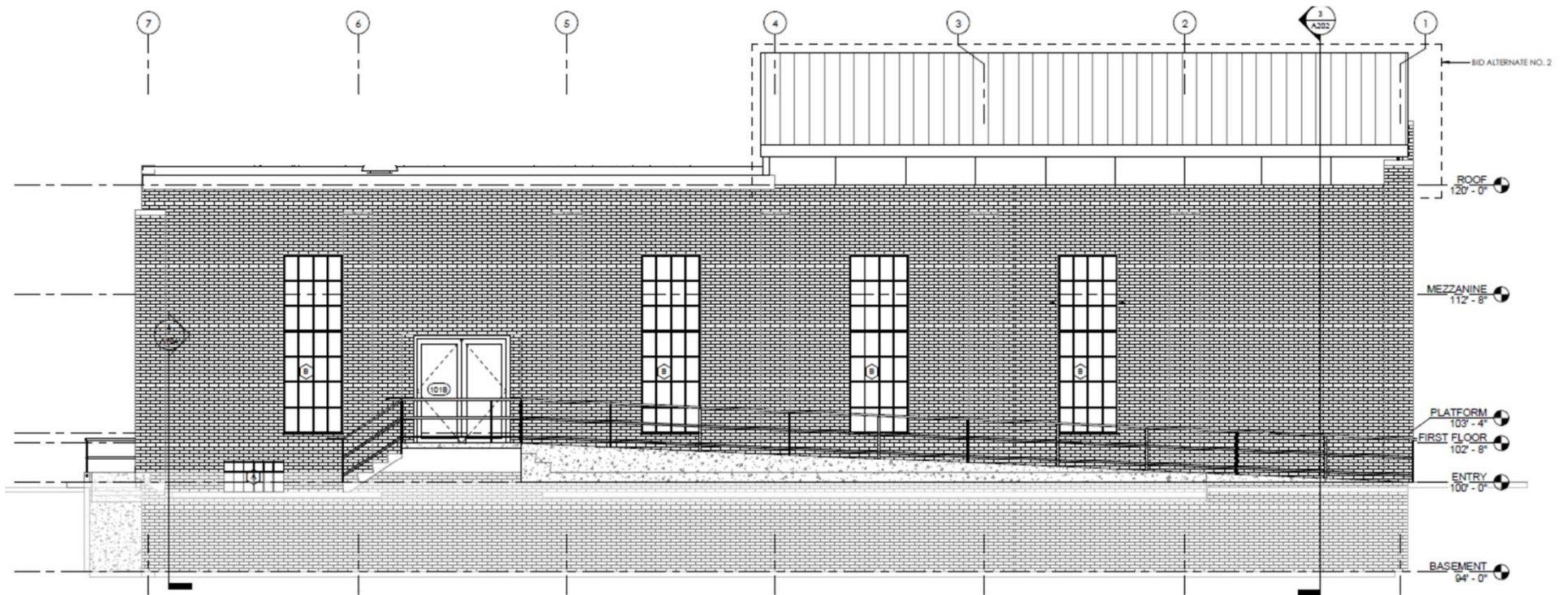
1 SOUTH ELEVATION
A102 1/4" = 1'-0"



4 FROM WATSON



2 NORTH ELEVATION
A102 1/4" = 1'-0"



2 WEST ELEVATION
A101 1/4" = 1'-0"

Proposed Timeline and Proposed Use



ACD

- BPCDC: May 19
- HDC: June 10
- Permits: June 17
- Begin Construction

- Initial Use:
Construction Office
- Future Use:
Food and Beverage