

Brush Park CDC - Parking Recommendations Survey

The Brush Park Community Development Corporation (CDC) has engaged the Brush Park community to discuss various street parking issues. We received 175 responses on our original survey. Based on those results, the CDC developed these recommendations.

We are seeking additional community input on these recommendations before we provide official recommendations to City of Detroit officials.

This survey should take less than 5 minutes to complete.

* Required

1. **Did you participate in our original Neighborhood Parking Survey? ***

Mark only one oval.

- Yes
- No

2. **Please describe your primary relationship with Brush Park ***

Check all that apply.

- I own residential or commercial property in Brush Park but do not live in Brush Park
- I operate a commercial business in Brush Park
- I am a customer of a commercial business in Brush Park (I do not live, own property or operate a business in Brush Park)
- I am a resident of Brush Park (owner or tenant of residential property)

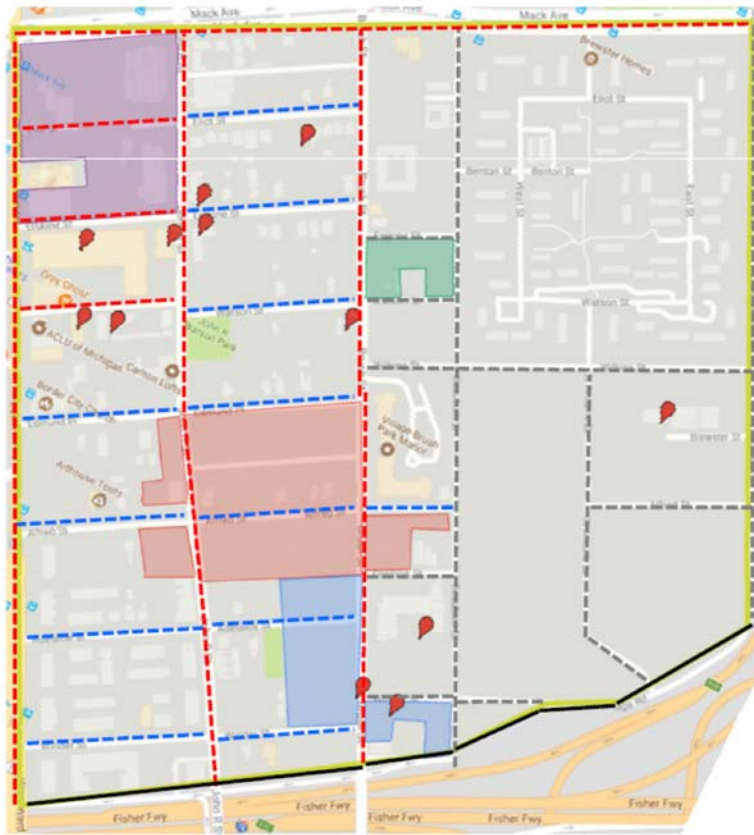
3. **How many years have you been a resident, property owner or business operator in Brush Park (enter numbers only) ***

4. If you are a resident, where do you live?*Mark only one oval.*

- On Winder, between Woodward and John R
- On Winder between John R and Brush
- On Adelaide between Woodward and John R.
- On Adelaide between John R. and Brush
- On Alfred between Woodward and John R.
- On Alfred between John R. and Brush
- on Alfred between Brush and Beaubien
- On Edmund between Woodward and John R.
- On Edmund between John R. and Brush
- on Watson between Woodward and John R.
- on Watson between John R. and Brush
- on Erskine between Woodward and John R.
- on Erskine between John R. and Brush
- on Eliot between John R. and Brush
- On John R. between Winder and Adelaide
- On John R. between Adelaide and Alfred
- On John R. between Alfred and Edmund
- On John R. between Edmund and Watson
- On John R. between Watson and Erskine
- On John R. between Erskine and Eliot
- On Woodward between 1-75 and Winder
- On Woodward between Winder and Adelaide
- On Woodward between Adelaide and Alfred
- Brewster Homes
- Carola Lofts
- Carlton Lofts
- Garden Lofts at Woodward Place
- John R. Apartments
- The Scott at Brush Park
- Village - Brush Park Manor
- On Mack
- Other: _____

CDC Recommendations

Please take a moment to read our recommendations in full at www.BrushParkCDC.org/parking before answering the questions below.



BRUSH PARK CDC
 Neighborhood Parking
 Recommendations
 Updated as of 3.7.18

Recommendations Key

- Permit Parking
- Paid Parking Zone
- No Parking
- TBD

The highlighted areas and markers represent development projects proposed or currently underway in Brush Park.

For information on the development projects noted on this map, please visit our website at BrushParkCDC.org

5. **Do you support or not support the CDC's preliminary recommendations? ***
 Mark only one oval.

- Strongly Support
- Support
- Do not support
- Strongly do not support

6. **What are your reasons for supporting or not supporting these recommendations? ***

7. **Is there anything about the recommendations that concern you?**

8. **Do you have any feedback about other parking related concerns that you'd like to share?**

9. **We'd love to stay connected to you and share update on our parking progress. Please leave your email if you'd like updates.**

10. **Please leave your name if you'd like us to follow up on your specific comments, questions or concerns.**

