



MPD Brush Park Residential
Zone Proposal Review

Northern Brush Park



MPD Residential Parking Proposal Goals



- Provide residential parking relief
- Maintain support for non-residential entities operating in Brush Park
- Disincentivize non-Brush Park related parking



MPD Brush Park RPP Plan Approach



- Review off-street parking capacity
- Review on-street parking capacity
- Review on-street usage
- Identify residential and non-residential parking activity
- Create RPP parking pressure reduction plan

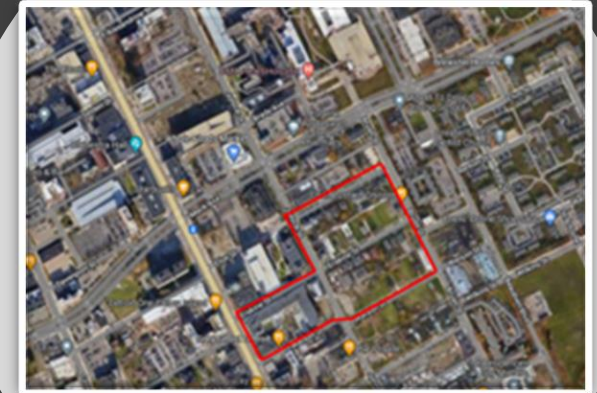
Southern Brush Park



Central Brush Park



Northern Brush Park



MPD Brush Park Neighborhood Divisions

Southern Brush Park

Residential w/heavy Little Caesars Arena (LCA) activity and Hotel/Airbnb activity

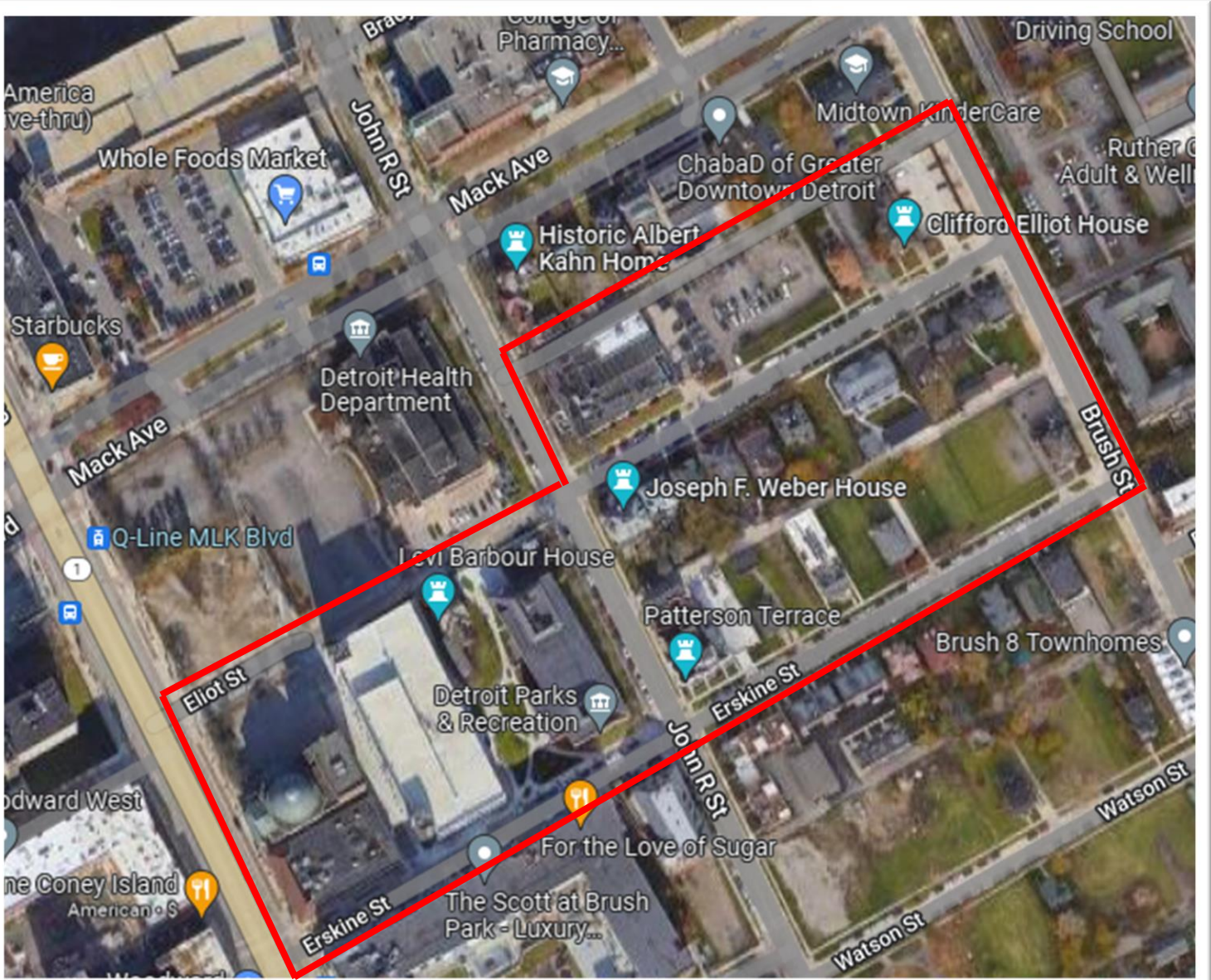
Central Brush Park

Mixed residential/retail/office/commercial w/heavy LCA activity

Northern Brush Park

Mixed residential/retail/commercial/non-profit/organizations/government w/LCA and WSU/DMC activity

Mixed Residential/Retail/Commercial/Non-profit/Organizations/Government w/ LCA and WSU/DMC activity



- Boundaries
 - Starting point: Woodward & Erskine
 - Woodward to Eliot
 - Eliot to John R
 - John R to Eliot
 - Eliot to Brush
 - Brush to Erskine
 - Erskine to Woodward





Northern Brush Park Neighborhood Makeup – Eliot



- Residential -Eliot
 - **Levi Barbour House 86 Eliot – no parking (surrounded by SOMA garage, Parks & Recreation, City Departments, and Future Target)**
 - **Joseph F. Weber House 206 Eliot–w/ alley access but no parking**
 - **216 Eliot – alley access w/no parking in the rear**
 - **228 Eliot – alley access but no parking**
 - 234 Eliot – alley access w/detached single car garage and gravel parking
 - 246-250 Eliot – alley access w/ grass area that can be used for parking (not occupied during rehabilitation)
 - 258 Eliot – alley access w/grass area that can be used for parking (not occupied)
 - William Livingston Modern House 284 Eliot – alley access with detached garage parking
 - 290-300 Eliot – alley access with grass/gravel area that can be used for parking (not occupied)
 - 308 Eliot – alley access with detached garage parking
 - 314- 316 Eliot – alley access with detached garage parking
 - 324 Eliot – alley access w/no parking in rear but small driveway off Eliot in the front
 - Clifford Elliot House 350 Eliot – parking in the back
- Government/ Educational/Health Institutions
 - **Detroit Health, General Services, and DDOT Department Offices 100 Mack – small parking lot w/meter parking (purchased parking in SOMA garage)**
 - **Detroit Parks & Recreation/ Lenox Center 115 Erskine - no parking w/on-street meters only (purchased parking in SOMA garage)**
- Greek Letter Fraternity
 - Alpha Phi Alpha 293 Eliot – small paved lot east side of the house, large gated parking lot on the west side of the house w/street parking
- Commercial
 - Rainbow Childcare Center Parking Lot 3511 Brush –parking lot
 - Detroit Institute Behavioral Institute/Capstone 3500 John R– large gated lot half empty normally(street parking is used – building not occupied now)
 - Future Target Shopping Center 90 Mack to be built within the next year – limited parking planned
 - Hotel



Northern Brush Park Neighborhood Makeup - Erskine



- Residential -Erskine
 - Patterson Terrace 201 -237 Erskine – parking lot in the rear w/ alley access and on-street parking
 - 200 -240 Erskine – garages in the rear w/alley access
 - 231 Erskine – detached garage in the rear
 - **239-253 Erskine - no off-street parking (30 units)**
 - 246 Erskine – not occupied w/ rear alley access which is overgrown
 - **253 Erskine – no parking**
 - 266 Erskine – not occupied w/ rear alley access which is overgrown
 - 276-284 Erskine – rear alley access with grass parking
 - 296-294 Erskine - rear alley access with grass parking
 - 304 Erskine – paved lot in rear via alley access
 - 323 Erskine – gravel parking lot
 - The Scott at Brush Park 3150 Woodward mixed use residential – underground garage and lot parking
- Government/ Educational/Health Institutions
 - Detroit Parks and Recreation 115 Erskine – small staff lot w/meter parking
 - Michigan State University Detroit Center 3424 Woodward – no off-street parking
 - Wayne State University (Vacant) 3424 Woodward – parking lot on side of structure
 - Wayne Health Detroit Mack Health Center 400 Mack – large lots surrounding the facility
- Fraternal Organizations
 - Kappa Alpha Psi 269 Erskine –grass lots used for parking w/ on-street parking
 - Masonic King David Grand Lodge/St. Luke Lodge #1 – gated lot on side of the building w/on-street parking
- Commercial
 - The Scott at Brush Park 3150 Woodward mixed use retail/offices – on-street meter parking and lot parking in the rear
 - SOMA Parking Garage
 - 3407 Brush Chili Mustard Onions– small employee parking lot but no parking on-street (vacant)



MPD Brush Park RPP Plan Rationale for Northern Brush Park



• Eliot

- WSU & DMC traffic attracted to free parking
 - Under utilized Wayne State Parking Structure #7
 - DMC traffic needs to be redirected to DMC structures
- City of Detroit Departments 100 Mack traffic
 - City parking needs redirected to SOMA Garage (General Services, DDOT, and Health Department purchased parking space in SOMA Garage)
- Detroit Institute of Behavioral Institute
 - Under utilized parking lot driving on street parking usage on Eliot (Now vacant)
- SOMA Garage
 - Under utilized parking structure can support parking overflow
- Future Target with limited parking will create more parking pressure
 - Approximately 120 spaces
- Future AC Marriot Hotel
 - Vacated public right-of-way (Eliot between Woodward and John R)

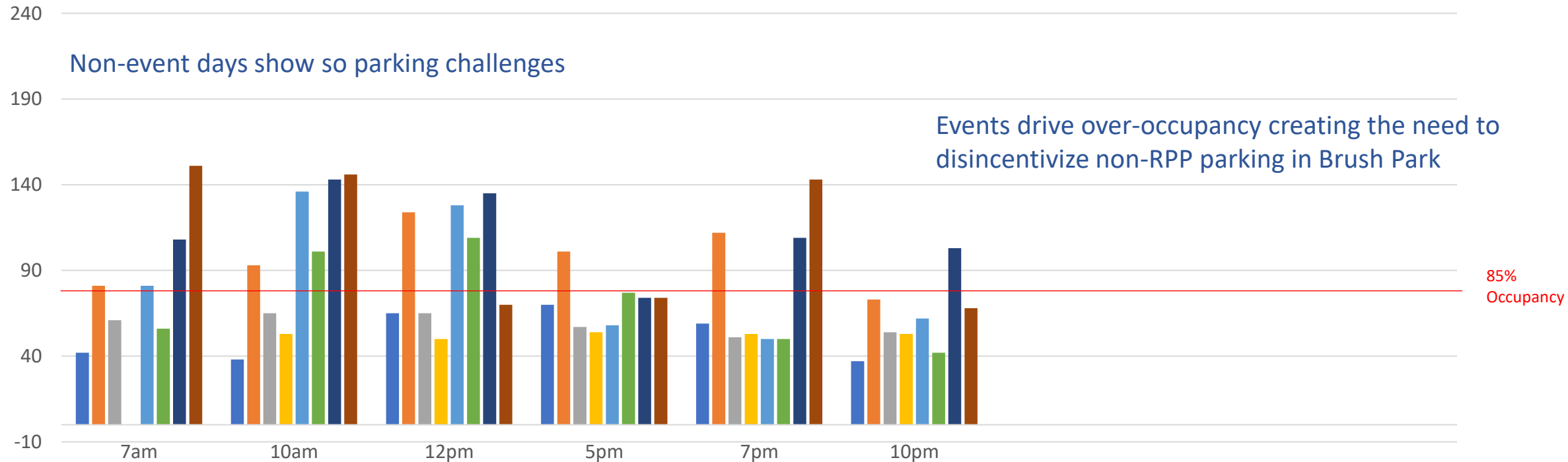
• Erskine

- The Scott residential parking will be redirected to a separate RPP Zone
- City of Detroit Recreation and Parks Department -100 Erskine parking
 - City parking needs have been redirected to SOMA Garage (General Services, DDOT, and Health Department purchased parking space in SOMA Garage)
- Illegal alley parking
 - MPD and DPD will begin to enforce to assist residents with parking access and egress concerns
 - Residents can call MPD at 313-221-2558 for enforcement



Eliot (John R to Brush)

On-street parking occupancy



LCA: Little Caesars Arena
 FF: Ford Field
 CP: Comerica Park
 FOX: Fox Theatre

EVENTS – 6/29/22

LCA: Dynamite/Rampage 7p
 FOX: Tedeschi Trucks Band 6:30p
Thursday

EVENTS – 7/1/22

CP: Tigers vs Royals 7:10p
Friday

EVENTS-7/2/22

CP: Tigers vs Royals 4:10p
 LCA: Summer Slam 8p
Saturday

EVENTS-7/3/22

CP: Tigers vs Royals 4:10p
 LCA: Summer Slam 8p
Sunday

EVENTS-7/7/22

Unknown Events
Thursday

EVENTS-7/11/22

No Events
Monday

EVENTS-7/14/22

LCA: Kevin Hart 7p
Thursday

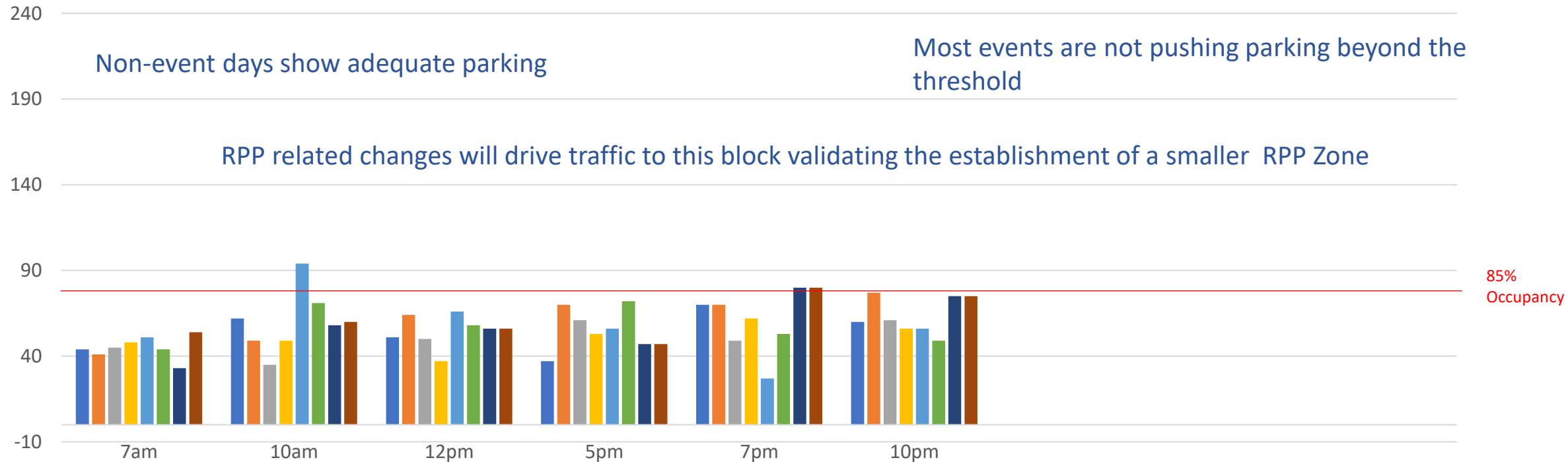
EVENTS-7/18/22

CP: Elton John 8p
 Filmore: Three Days Grace 6p
Monday



Erskine (John R to Brush)

On-street parking occupancy



LCA: Little Caesars Arena
 FF: Ford Field
 CP: Comerica Park
 FOX: Fox Theatre

EVENTS – 6/29/22

LCA: Dynamite/Rampage 7p
 FOX: Tedeschi Trucks Band 6:30p
Thursday

EVENTS – 7/1/22

CP: Tigers vs Royals 7:10p
Friday

EVENTS-7/2/22

CP: Tigers vs Royals 4:10p
 LCA: Summer Slam 8p
Saturday

EVENTS-7/3/22

CP: Tigers vs Royals 4:10p
 LCA: Summer Slam 8p
Sunday

EVENTS-7/7/22

Unknown Events
Thursday

EVENTS-7/11/22

No Events
Monday

EVENTS-7/14/22

LCA: Kevin Hart 7p
Thursday

EVENTS-7/18/22

CP: Elton John 8p
 Filmore: Three Days Grace 6p
Monday



John R (Erskine to Edmund)

On-street parking occupancy



LCA: Little Caesars Arena
 FF: Ford Field
 CP: Comerica Park
 FOX: Fox Theatre
 FIL: Filmore Theatre

EVENTS – 6/29/22
 LCA: Dynamite/Rampage 7p
 FOX: Tedeschi Trucks Band 6:30p
Thursday

EVENTS – 7/1/22
 CP: Tigers vs Royals 7:10p
Friday

EVENTS-7/2/22
 CP: Tigers vs Royals 4:10p
 LCA: Summer Slam 8p
Saturday

EVENTS-7/3/22
 CP: Tigers vs Royals 4:10p
 LCA: Summer Slam 8p
Sunday

EVENTS-7/7/22
 FIL: War on the Catwalk 7p
Thursday

EVENTS-7/11/22
 No Events
Monday

EVENTS-7/14/22
 LCA: Kevin Hart 7p
Thursday

EVENTS-7/18/22
 CP: Elton John 8p
 Filmore: Three Days Grace 6p
Monday





MPD Brush Park RPP Plan Rationale for Northern Brush Park



- Residents have protected parking daily (4pm until 9am)
 - Eliot & Erskine(4pm until 9am)
 - John R (The Scott at Brush Park) access to on-street parking
 - Other Brush Park residents are unable to use the available residential space in Northern Brush Park
- Non-residential activity parking still supported
 - All non-residential parking activity contained to designated non-residential areas
 - Meters promote the use of unused parking lots in the corridor
 - Meters push non-Brush Park destination motorist away from Eliot and Erskine
 - Without meters residents will not sign up for RPP
- Non-Northern Brush Park parking disincentivized
 - MPD will enforce violators
 - Non-Residential Permit holders
 - Meter violators

Southern Brush Park RPP Summary



1) Northern Brush Park is suffering from extreme parking demand due to free parking.

2) Activity from the DMC, Wayne State, and the City of Detroit departments create unique parking pressure differing from the rest of Brush Park.

3) Little Caesars traffic escalates parking pressure on residents.

4) The Future Target Shopping Center and AC Marriot will add to the parking pressure.

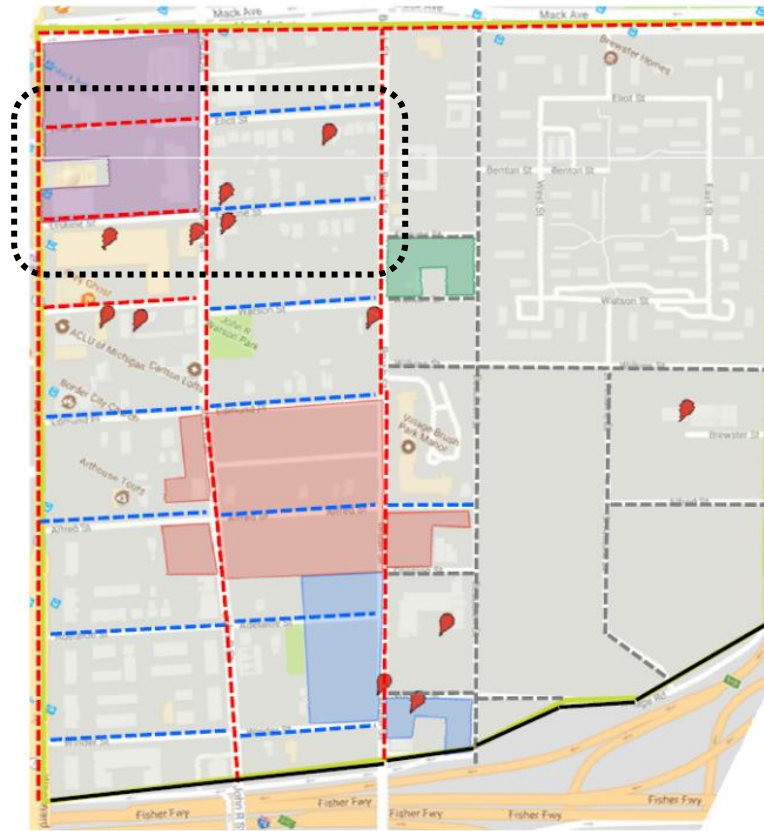
Meters are needed to limit non-Brush Park parking and motivate residents to use residential parking zones rather than public parking areas.



Brush Park CDC Recommendations



Meeting Focus Area



BRUSH PARK CDC
Neighborhood Parking
Recommendations
Updated as of 3.7.18

- Recommendations Key**
- Permit Parking
 - Paid Parking Zone
 - No Parking
 - - - TBD

The highlighted areas and markers represent development projects proposed or currently underway in Brush Park.

For information on the development projects noted on this map, please visit our website at BrushParkCDC.org



Zones 426 & 206 (Eliot)



- Residential Parking 
- Meter Parking 
- No Parking 
- Non- Meter Parking 
- Private Lots  Private Lots
- Existing Meters 
- Public Transit Stop 
- Future RPP Parking 
- Residential Meter Parking 
- Residential Groups 
- Valet 
- Commercial  Commercial

Zones 424 & 425 (Erskine)



- Residential Parking 
- Meter Parking 
- No Parking 
- Non- Meter Parking 
- Private Lots  Private Lots
- Existing Meters 
- Public Transit Stop 
- Future RPP Parking 
- Residential Meter Parking 
- Residential Groups 
- Valet 
- Commercial  Commercial

Residential Parking Plan – Erskine/Eliot Streets (Northern Brush Park)



- Residential Parking
- Meter Parking
- No Parking
- Non- Meter Parking
- Private Lots
- Existing Meters
- Public Transit Stop
- Future RPP Parking
- Residential Meter Parking
- Residential Groups
- Valet
- Commercial

Residential Parking Plan –Erskine/Eliot Streets (Brush Park) Area #3



- Residential Parking ——
- Meter Parking ——
- No Parking ——
- Non- Meter Parking ——
- Private Lots Private Lots
- Existing Meters ——
- Public Transit Stop ——
- Future RPP Parking - - - -
- Residential Meter Parking ——
- Residential Groups
- Valet - - - -
- Commercial Commercial

Southern Brush Park RPP Summary



1) City of Detroit department parking is redirected to SOMA garage

2) Residents on Eliot and Erskine receive protected parking from 4pm until 9am

3) Historical organizations on Eliot and Erskine still able to access parking via parking meters and their private lots. This reduces parking abuse from DMC, Wayne State, City of Detroit, and Little Caesars events

4) Future parking pressure pushed out of the neighborhood and into off-street parking options

The MPD proposed plan will provide residential parking relief, support business activity, and maintain the presence of the historical organizations in the Northern Brush Park area.



Time Period Sign Only Residential Parking Zone

Signs for
Zones
424 (Erskine)
Southside of street

- Two vehicles per permit will be allowed to be registered
- 30 annual visitor passes
- Potentially up to 3 caregiver passes
- Car Rental passes based on visitor pass availability



Time Period Sign Only Residential Parking Zone

Signs for
Zone
425 (Erskine)
Northside of street

- Two vehicles per permit will be allowed to be registered
- 30 annual visitor passes
- Potentially up to 3 caregiver passes
- Car Rental passes based on visitor pass availability



Residential permit holders park 24hrs every day



Non-Residential permit holders can park anytime but must pay the meter or ParkDetroit app



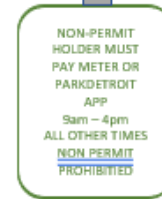
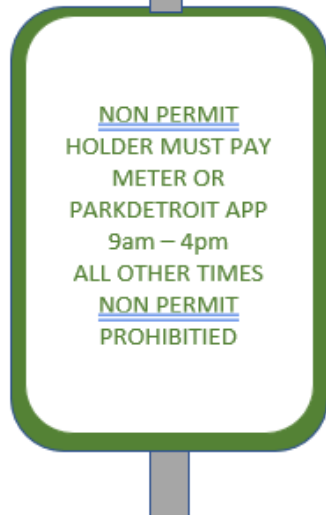
Time Period Sign Only Residential Parking Zone

Signs for
Zones
426 (Eliot)
Southside of street

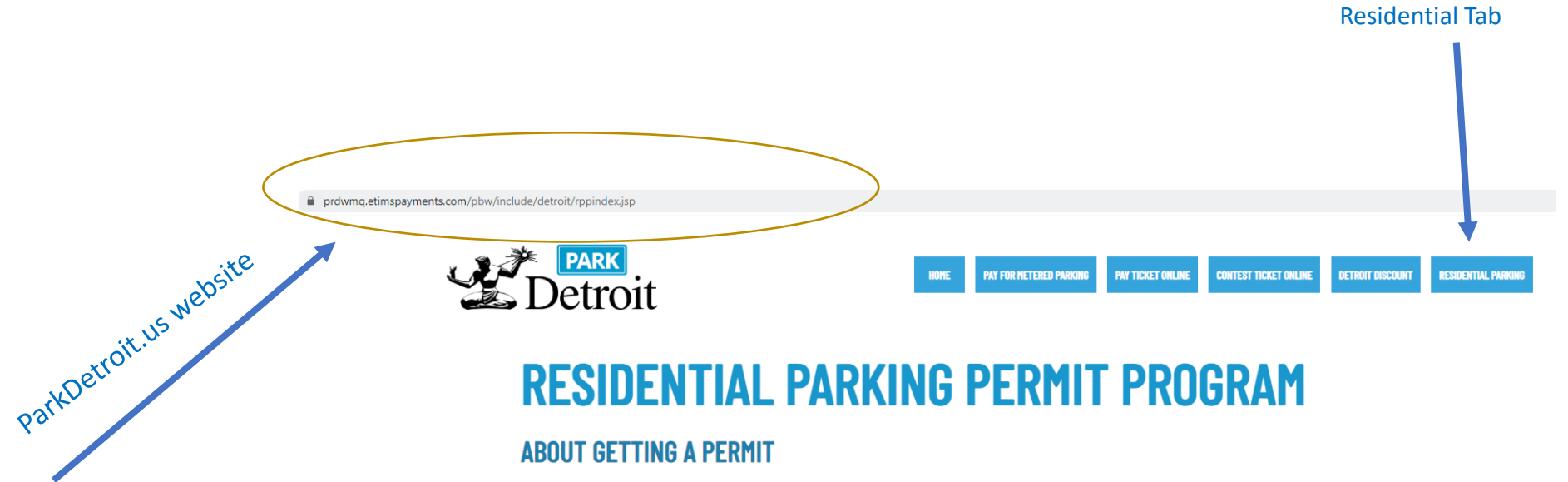
- Two vehicles per permit will be allowed to be registered
- 30 annual visitor passes
- Potentially up to 3 caregiver passes
- Car Rental passes based on visitor pass availability



Residential permit holders park 24hrs every day



Residential Parking Permit Access



<https://prdwmq.etimspayments.com/pbw/include/detroit/rppindex.jsp>



Residential Parking Income Exception Discount



- Income Exemption Status
 - Department of Income Exemption will screen and qualify citizens seeking income exemption status
- Database
 - Income Exemption will provide the database to MPD
- Income Exemption Discount
 - The MPD Enforcement vendor will query the database and provide qualified RPP applicants the Discount



Senior Residential Parking Discount



- Residential Parking Senior Discount
 - The discount will be automatically applied to applicants 65 years or older

Residential Parking Permit Cost Schedule



	ONE TIME ADMINISTRATION FEE	RPP ANNUAL PERMIT FEE	VISTOR PERMIT FEE PER USE (30 ea)	AUTO RENTAL RPP PERMIT FEE	CAREGIVER RPP ANNUAL PERMIT FEE	Zone Transfer Fee
Property Owners Permit	\$35.00	\$60.00	\$1.00			\$20.00
Residential Parking Permit	\$35.00	\$60.00	\$1.00			\$20.00
Senior Residential Parking Permit	\$35.00	\$30.00	\$1.00			\$20.00
Income Exemption Parking Permit	\$35.00	\$30.00	\$1.00			\$20.00



Comments or Questions



