

Brush Park Parking

Southern Neighborhood – 1/10/23 @ 5:30pm

Central Neighborhood – 1/11/23 @ 5:30pm

Northern Neighborhood – 1/12/23 @ 5:30pm





MPD Brush Park Residential
Zone Proposal Review

Northern Brush Park



Municipal Parking Department (MPD) Community Engagement Meeting Procedure



- Participants must register to enter the meeting
 - Meeting for those residing or entities doing business in Northern Brush Park MPD designation
- During the presentation – hold questions and comments until the question and comment section
- Raise hand to ask a question or provide feedback
 - Provide your name and residential or commercial address
 - 1 minute per question or comment
- Electronic copy of presentation is available for registrants upon request
 - Email mpdresidentialparking@detroitmi.gov



MPD Residential Parking Proposal Goals



- Provide residential parking relief
- Maintain support for non-residential entities operating in Brush Park
- Disincentivize non-Brush Park related parking



MPD Brush Park RPP Plan Approach



- Review off-street parking capacity
- Review on-street parking capacity
- Review on-street usage
- Identify residential and non-residential parking activity
- Create RPP parking pressure reduction plan

Southern Brush Park



Central Brush Park



Northern Brush Park



MPD Brush Park Neighborhood Divisions

Southern Brush Park

Residential w/heavy Little Caesars Arena (LCA) activity and Hotel/Airbnb activity

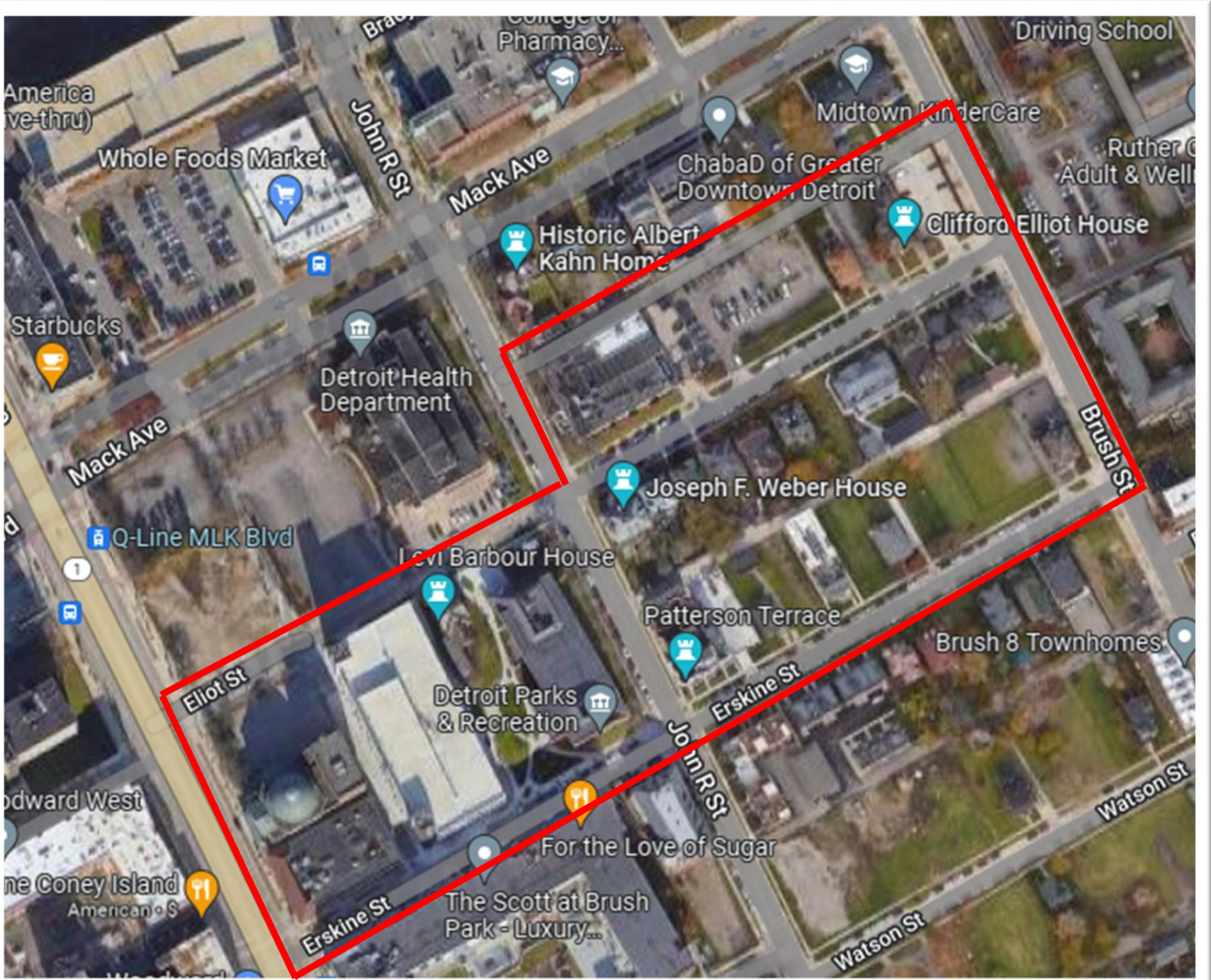
Central Brush Park

Mixed residential/retail/office/commercial w/heavy LCA activity

Northern Brush Park

Mixed residential/retail/commercial/non-profit/organizations/government w/LCA and WSU/DMC activity

Mixed Residential/Retail/Commercial/Non-profit/Organizations/Government w/ LCA and WSU/DMC activity



- Boundaries
 - Starting point: Woodward & Watson
 - Woodward to Erskine
 - Erskine to John R
 - John R to Eliot
 - Eliot to Brush
 - Brush to Watson
 - Watson to Woodward





Northern Brush Park Neighborhood Makeup – Eliot



- Residential -Eliot
 - Joseph F. Weber House 206 Eliot–w/ alley access but no parking
 - 216 Eliot – alley access and grass parking
 - 228 Eliot – alley access but no parking
 - 234 Eliot – alley access w/detached single car garage and gravel parking
 - 246-250 Eliot – alley access w/ no parking(not occupied during rehabilitation)
 - 258 Eliot – alley access w/no parking
 - William Livingston Modern House 284 Eliot – alley access with detached garage parking
 - 290-300 Eliot – alley access with no parking access (not occupied)
 - 308 Eliot – alley access with detached garage parking
 - 314- 316 Eliot – alley access with detached garage parking
 - 324 Eliot – alle access w/no parking in rear but small driveway off Eliot in the front
- Government/ Educational/Health Institutions
 - Detroit Health, General Services, and DDOT Department Offices 100 Mack – small parking lot
- Greek Letter Fraternity
 - Alpha Phi Alpha 293 Eliot – small paved lot on the side
- Commercial
 - 3407 Brush Chili Mustard Onions– small employee parking lot but no parking on-street
 - Clifford Elliot House 350 Eliot – parking lot on the side of structure
 - Detroit Institute Behavioral Institute/Capstone 3500 John R– large gated lot half empty normally(street parking is used)
 - Future Target Shopping Center 90Mack to be built within the next year – limited parking planned



Northern Brush Park Neighborhood Makeup - Erskine

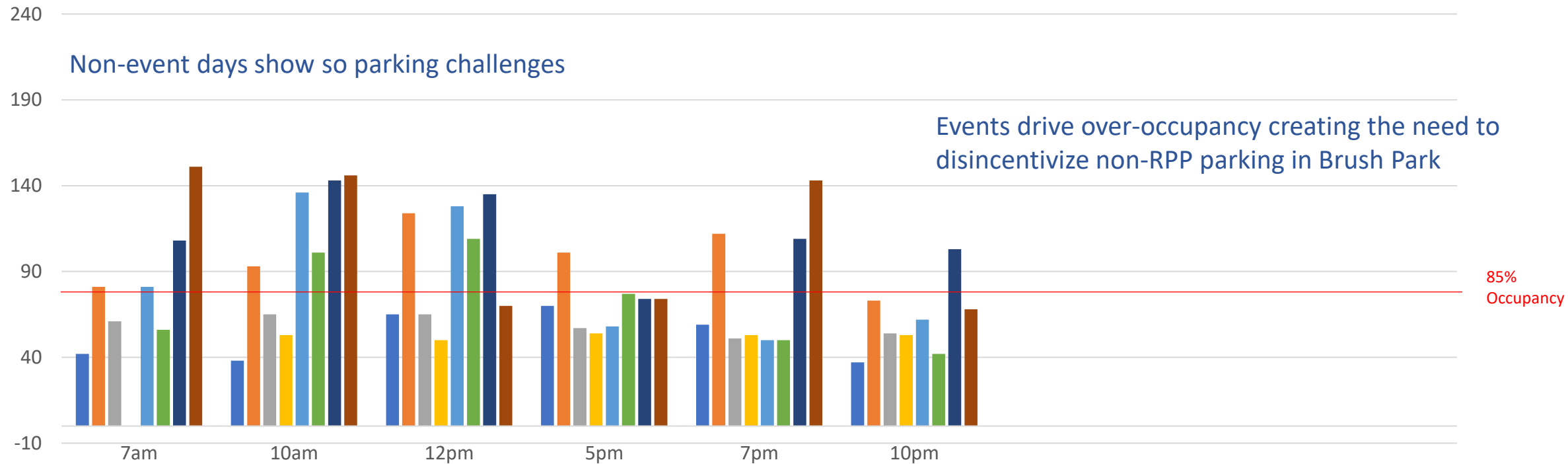


- Residential -Erskine
 - 253 Erskine – no parking
 - Patterson Terrace – parking lot in the rear w/ alley access
 - 221-233 Erskine – detached garage in the rear
 - 239-253 Erskine - no off-street parking
 - Brush Park Village – minimal parking in the rear
 - 201 -237 Erskine – detached garage parking in the rear w/alley access
 - 246 Erskine – not occupied w/ rear alley access which is overgrown
 - 266 Erskine – not occupied w/ rear alley access which is overgrown
 - 276-284 Erskine – rear alley access with grass parking
 - 296-294 Erskine - rear alley access with grass parking
 - 304 Erskine – paved lot in rear via alley access
 - 323 Erskine – gravel parking lot
 - The Scott at Brush Park 3150 Woodward mixed use residential – underground garage and lot parking
- Government/ Educational/Health Institutions
 - Detroit Parks and Recreation 115 Erskine – no off-street parking
 - Michigan State University Detroit Center 3424 Woodward – no off-street parking
 - Wayne State University (Vacant) 3424 Woodward – parking lot on side of structure
 - Wayne Health Detroit Mack Health Center 400 Mack – large lots surrounding the facility(no impact)
- Fraternal Organizations
 - Kappa Alpha Psi – no lot but have grass lot used for social events
 - Masonic King David Grand Lodge/St. Luke Lodge #1 – gravel lot on side of the building
- Commercial
 - The Scott at Brush Park 3150 Woodward mixed use retail/offices – on-street meter parking and lot parking in the rear
 - SOMA Parking Garage
 - 3407 Brush Chili Mustard Onions– small employee parking lot but no parking on-street



Eliot (John R to Brush)

On-street parking occupancy



LCA: Little Caesars Arena
 FF: Ford Field
 CP: Comerica Park
 FOX: Fox Theatre

EVENTS – 6/29/22

LCA: Dynamite/Rampage 7p
 FOX: Tedeschi Trucks Band 6:30p
Thursday

EVENTS – 7/1/22

CP: Tigers vs Royals 7:10p
Friday

EVENTS-7/2/22

CP: Tigers vs Royals 4:10p
 LCA: Summer Slam 8p
Saturday

EVENTS-7/3/22

CP: Tigers vs Royals 4:10p
 LCA: Summer Slam 8p
Sunday

EVENTS-7/7/22

Unknown Events
Thursday

EVENTS-7/11/22

No Events
Monday

EVENTS-7/14/22

LCA: Kevin Hart 7p
Thursday

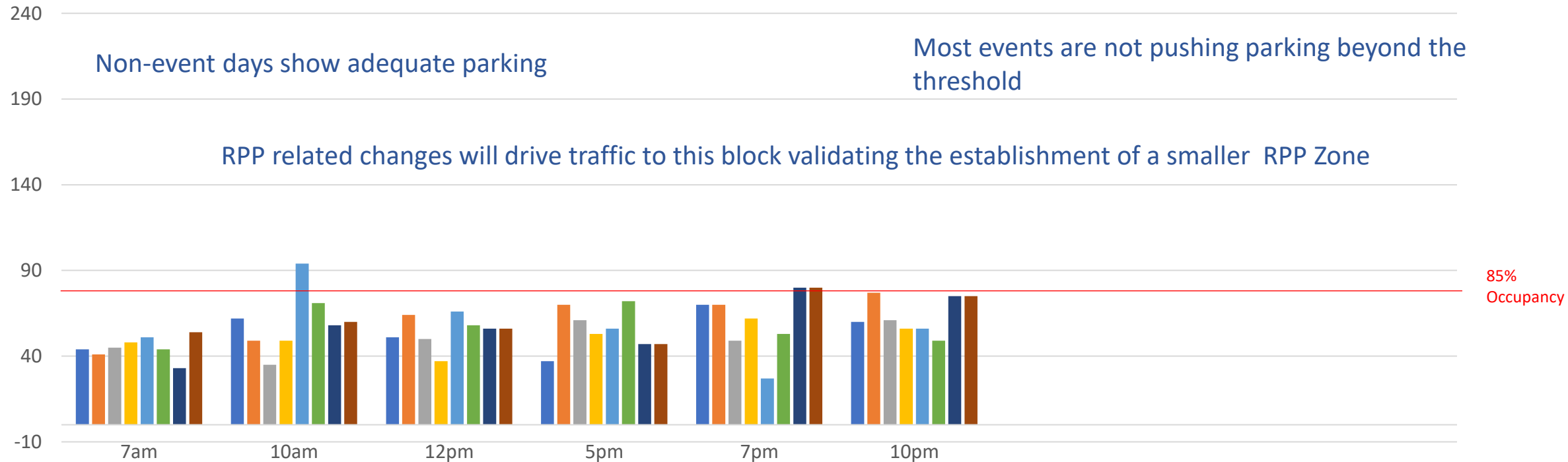
EVENTS-7/18/22

CP: Elton John 8p
 Filmore: Three Days Grace 6p
Monday



Erskine (John R to Brush)

On-street parking occupancy



LCA: Little Caesars Arena
 FF: Ford Field
 CP: Comerica Park
 FOX: Fox Theatre

EVENTS – 6/29/22

LCA: Dynamite/Rampage 7p
 FOX: Tedeschi Trucks Band 6:30p
Thursday

EVENTS – 7/1/22

CP: Tigers vs Royals 7:10p
Friday

EVENTS-7/2/22

CP: Tigers vs Royals 4:10p
 LCA: Summer Slam 8p
Saturday

EVENTS-7/3/22

CP: Tigers vs Royals 4:10p
 LCA: Summer Slam 8p
Sunday

EVENTS-7/7/22

Unknown Events
Thursday

EVENTS-7/11/22

No Events
Monday

EVENTS-7/14/22

LCA: Kevin Hart 7p
Thursday

EVENTS-7/18/22

CP: Elton John 8p
 Filmore: Three Days Grace 6p
Monday



John R (Erskine to Edmund)

On-street parking occupancy



Events are not affecting parking and this area is below the 85%

Retail and commercial entities require on-street parking support.

Residents may still need some parking support.

85%
Occupancy

LCA: Little Caesars Arena
 FF: Ford Field
 CP: Comerica Park
 FOX: Fox Theatre
 FIL: Filmore Theatre

EVENTS – 6/29/22

LCA: Dynamite/Rampage 7p
 FOX: Tedeschi Trucks Band 6:30p
Thursday



EVENTS – 7/1/22

CP: Tigers vs Royals 7:10p
Friday



EVENTS-7/2/22

CP: Tigers vs Royals 4:10p
 LCA: Summer Slam 8p
Saturday



EVENTS-7/3/22

CP: Tigers vs Royals 4:10p
 LCA: Summer Slam 8p
Sunday



EVENTS-7/7/22

FIL: War on the Catwalk 7p
Thursday



EVENTS-7/11/22

No Events
Monday



EVENTS-7/14/22

LCA: Kevin Hart 7p
Thursday

EVENTS-7/18/22

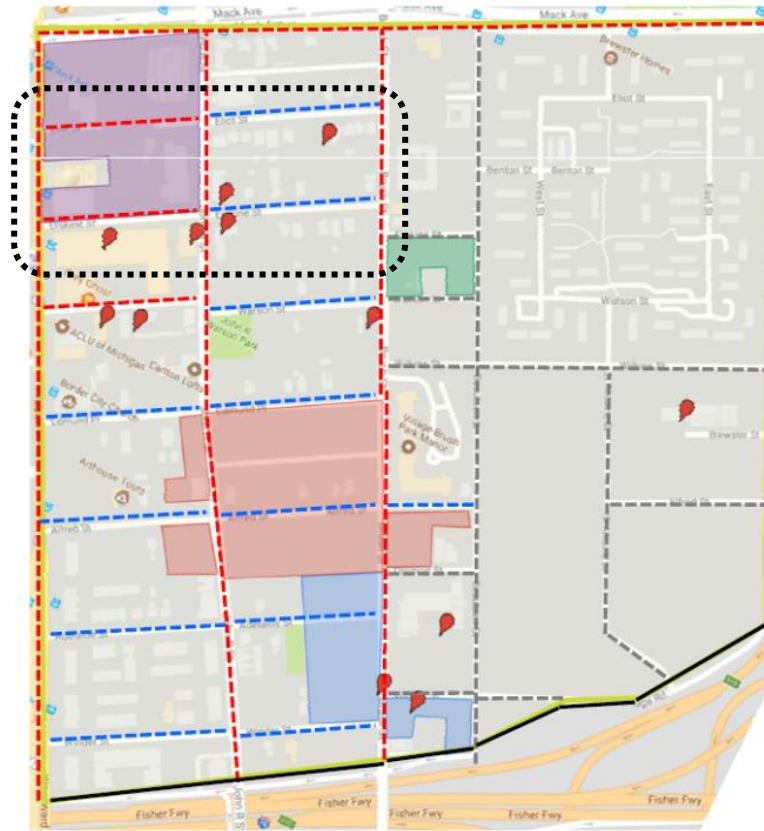
CP: Elton John 8p
 Filmore: Three Days Grace 6p
Monday



Brush Park CDC Recommendations



Meeting Focus Area



BRUSH PARK CDC
Neighborhood Parking
Recommendations
Updated as of 3.7.18

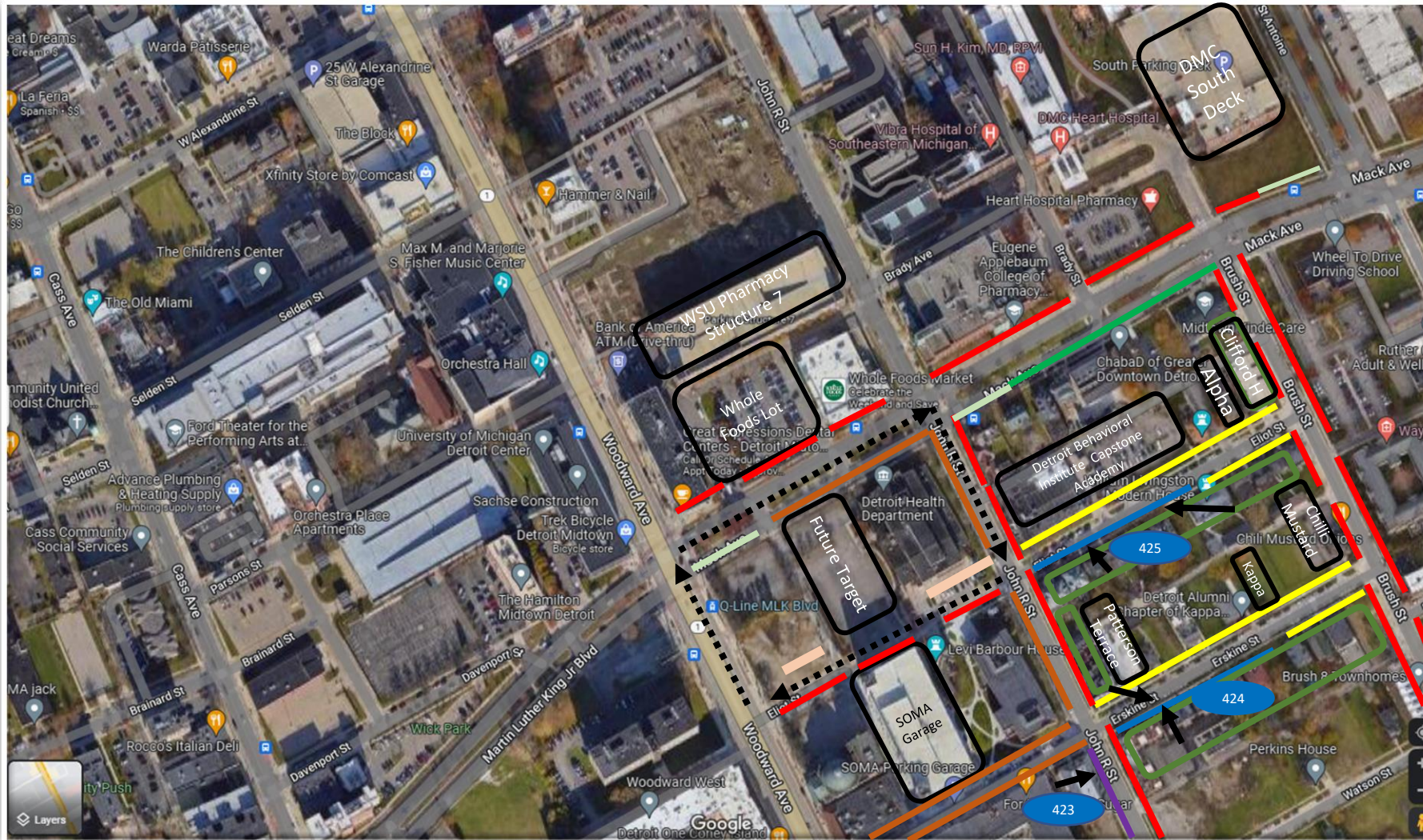
Recommendations Key	
	Permit Parking
	Paid Parking Zone
	No Parking
	TBD

The highlighted areas and markers represent development projects proposed or currently underway in Brush Park.

For information on the development projects noted on this map, please visit our website at BrushParkCDC.org

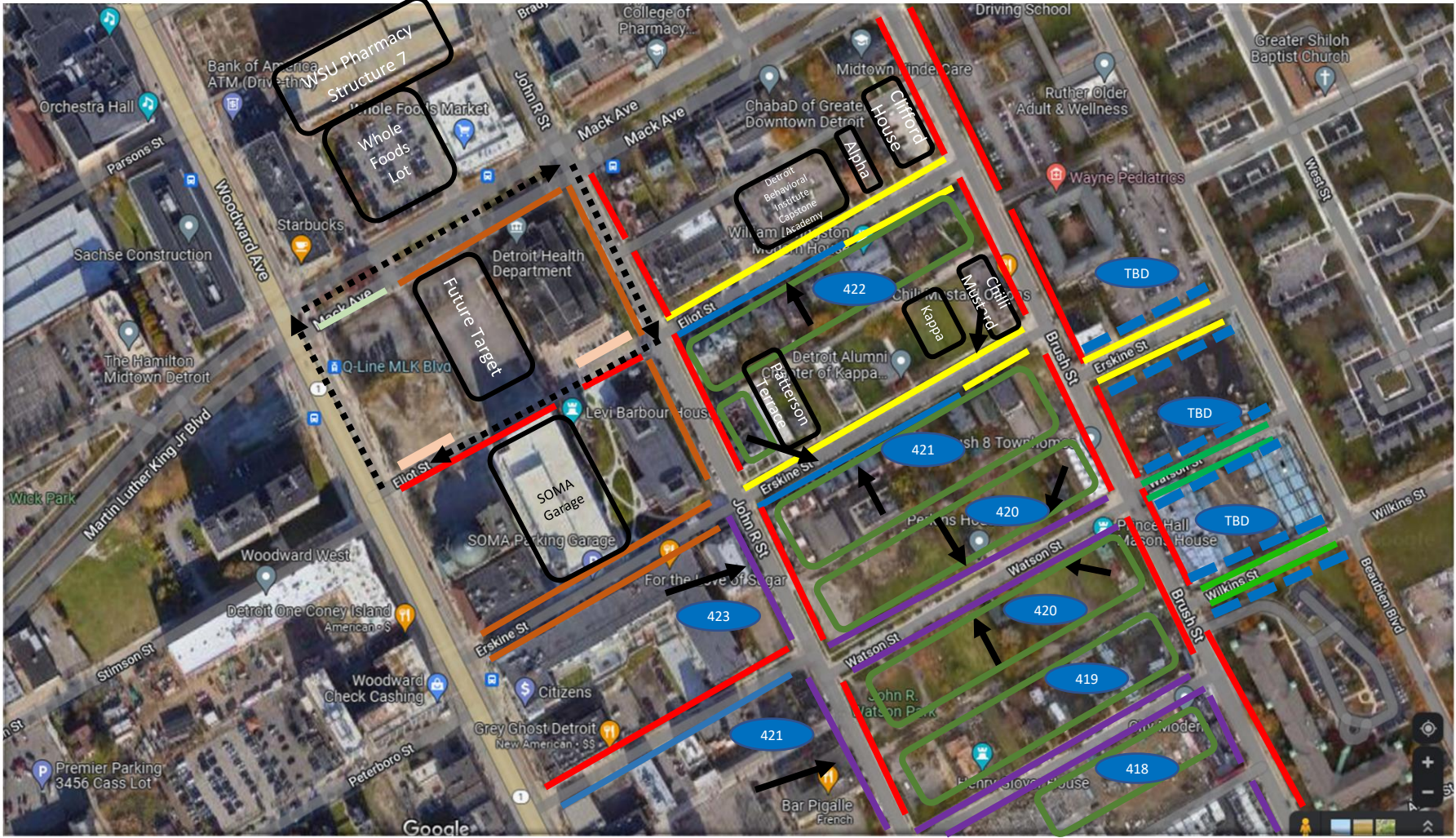


Residential Parking Plan – Erskine/Eliot Streets (Brush Park) Area #3



- Residential Parking
- Meter Parking
- No Parking
- Non- Meter Parking
- Private Lots Private Lots
- Existing Meters
- Public Transit Stop
- Future RPP Parking
- Residential Meter Parking
- Residential Groups
- Municipal Parking

Residential Parking Plan –Watson/Eliot/Erskine/Wilkins Streets (Brush Park) Area #3



- Residential Parking
- Meter Parking
- No Parking
- Non-Meter Parking
- Private Lots Private Lots
- Existing Meters
- Future RPP Parking
- Residential Meter Parking
- Residential Groups
- Future Non-Meter Parking
- Municipal Parking



MPD Brush Park RPP Plan Rationale for Northern Brush Park



- Eliot

- WSU & DMC traffic attracted to free parking
 - Under utilized Wayne State Parking Structure #7
 - DMC traffic needs to be redirected to DMC structures
- City of Detroit 100 Mack traffic
 - Placard area created (Erskine between John R & Woodward)
- Detroit Institute of Behavioral Institute
 - Under utilized parking lot raising on street parking usage
- SOMA Garage
 - Under utilized parking structure can support parking overflow
- Future Target with limited parking will create more parking pressure

- Erskine

- The Scott Residential parking will be redirected to a separate RPP Zone
- City of Detroit 100 Erskine parking
 - Placard area created (Erskine between John R & Woodward)
- Illegal alley parking
 - MPD and DPD will begin to enforce to assist residents with parking access and egress concerns
 - Residents can call MPD at 313-221-2558 for enforcement



MPD Brush Park RPP Plan Rationale for Northern Brush Park



- Residents have protected parking daily (5pm until 9am)
 - Eliot, Erskine, John R (The Scott at Brush Park)
 - Other Brush Park residents are unable to use the available residential space in Northern Brush Park
- Non-residential activity parking still supported
 - All non-residential parking activity contained to designated non-residential areas
 - Meters promote the use of unused parking lots in the corridor
 - Meters push non-Brush Park destination motorist away from Eliot and Erskine
 - Without meters residents will not sign up for RPP
- Non-Northern Brush Park parking disincentivized
 - MPD will enforce violators
 - Non-Residential Permit holders
 - Meter violators

Time Period Sign Only Residential Parking Zone

Signs for
Zones
424 (Erskine)
425 (Eliot)

- Two vehicles per permit will be allowed to be registered
- 30 annual visitor passes
- Potentially up to 3 caregiver passes
- Car Rental passes based on visitor pass availability



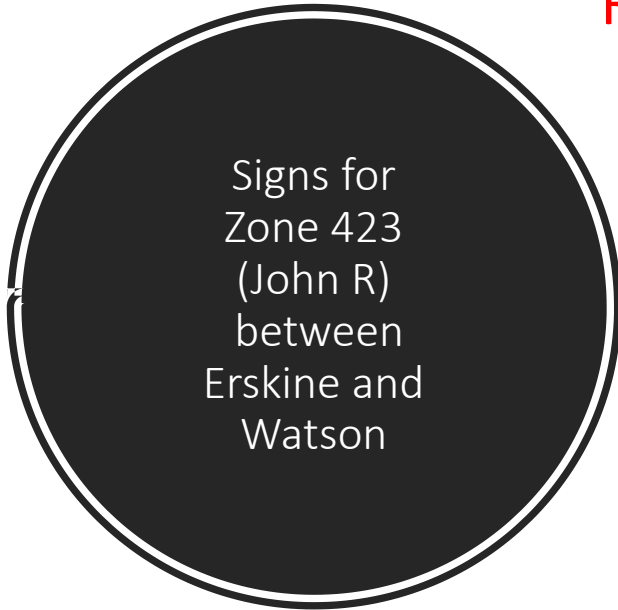
Residential permit holders park 24hrs every day

Non-Residential permit holders can park between 9am to 4pm



Time Period Metered Residential Parking Zone

Residential permit holders park 24hrs every day without paying meters



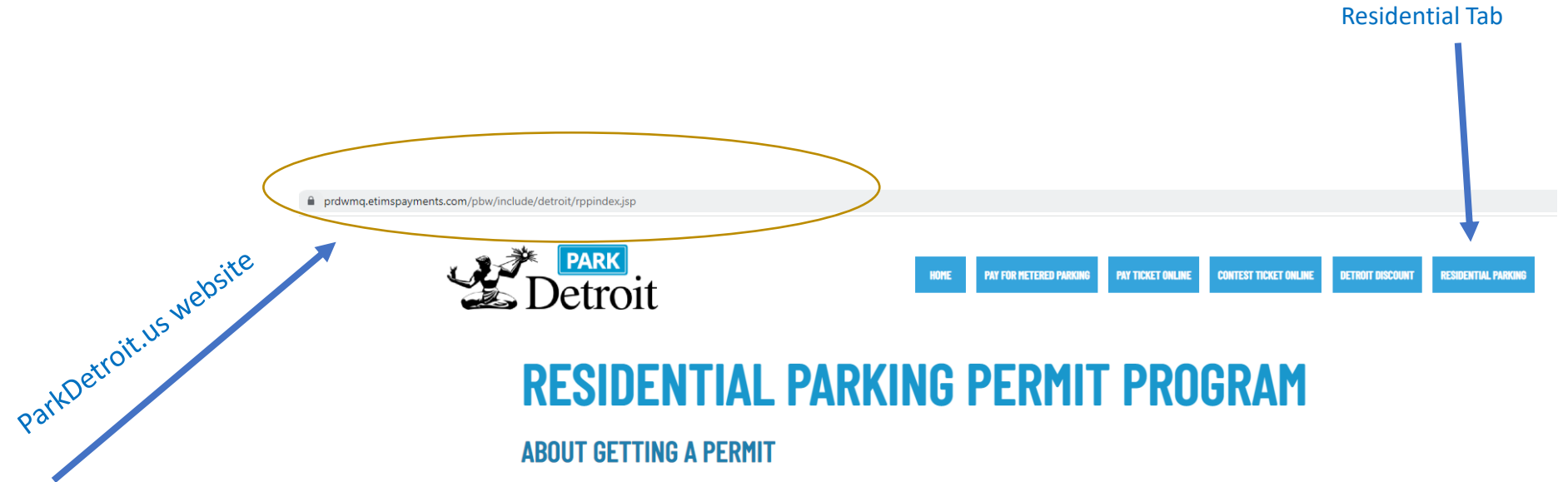
- Two vehicles per permit will be allowed to be registered
- 30 annual visitor passes
- Potentially up to 3 caregiver passes
- Car Rental passes based on visitor pass availability



Non-Residential permit holders can park at all times but must pay the meters or parking app



Residential Parking Permit Access



<https://prdwmq.etimspayments.com/pbw/include/detroit/rppindex.jsp>

You'll need to provide this information when you apply for Residential Parking Permits.

1. Name of the resident vehicle owner
2. Residential address
3. Operator's state driver's license number
4. Make, model, license plate number
5. Vehicle identification number
6. Current vehicle registration
7. Proof of residency - 1 required:
 - A copy of the applicant's unexpired driver's license; or
 - A copy of a City of Detroit Municipal Identification card; or
 - A declaration of residency by the owner; or
 - A declaration of residency by the manager of a rental property



Comments or Questions

1 minute maximum per speaker please



