

Brush Park Parking

Southern Neighborhood – 1/10/23 @ 5:30pm

Central Neighborhood – 1/11/23 @ 5:30pm

Northern Neighborhood – 1/12/23 @ 5:30pm





MPD Brush Park Residential
Zone Proposal Review

Southern Brush Park



Municipal Parking Department (MPD) Community Engagement Meeting Procedure



- Participants must register to enter the meeting
 - Meeting for those residing or entities doing business in Southern Brush Park MPD designation
- During the presentation – hold questions and comments until the question and comment section
- Raise hand to ask a question or provide feedback
 - Provide your name and residential or commercial address
 - 1 minute per question or comment
- Electronic copy of presentation is available for registrants upon request
 - Email mpdresidentialparking@detroitmi.gov



MPD Residential Parking Proposal Goals



- Provide residential parking relief
- Maintain support for non-residential entities operating in Brush Park
- Disincentivize non-Brush Park related parking



MPD Brush Park RPP Plan Approach



- Review off-street parking capacity
- Review on-street parking capacity
- Review on-street usage
- Identify residential and non-residential parking activity
- Create RPP parking pressure reduction plan

Southern Brush Park



Central Brush Park



Northern Brush Park



MPD Brush Park Neighborhood Divisions

Southern Brush Park

Residential w/heavy Little Caesars Arena (LCA) activity and Hotel/Airbnb activity

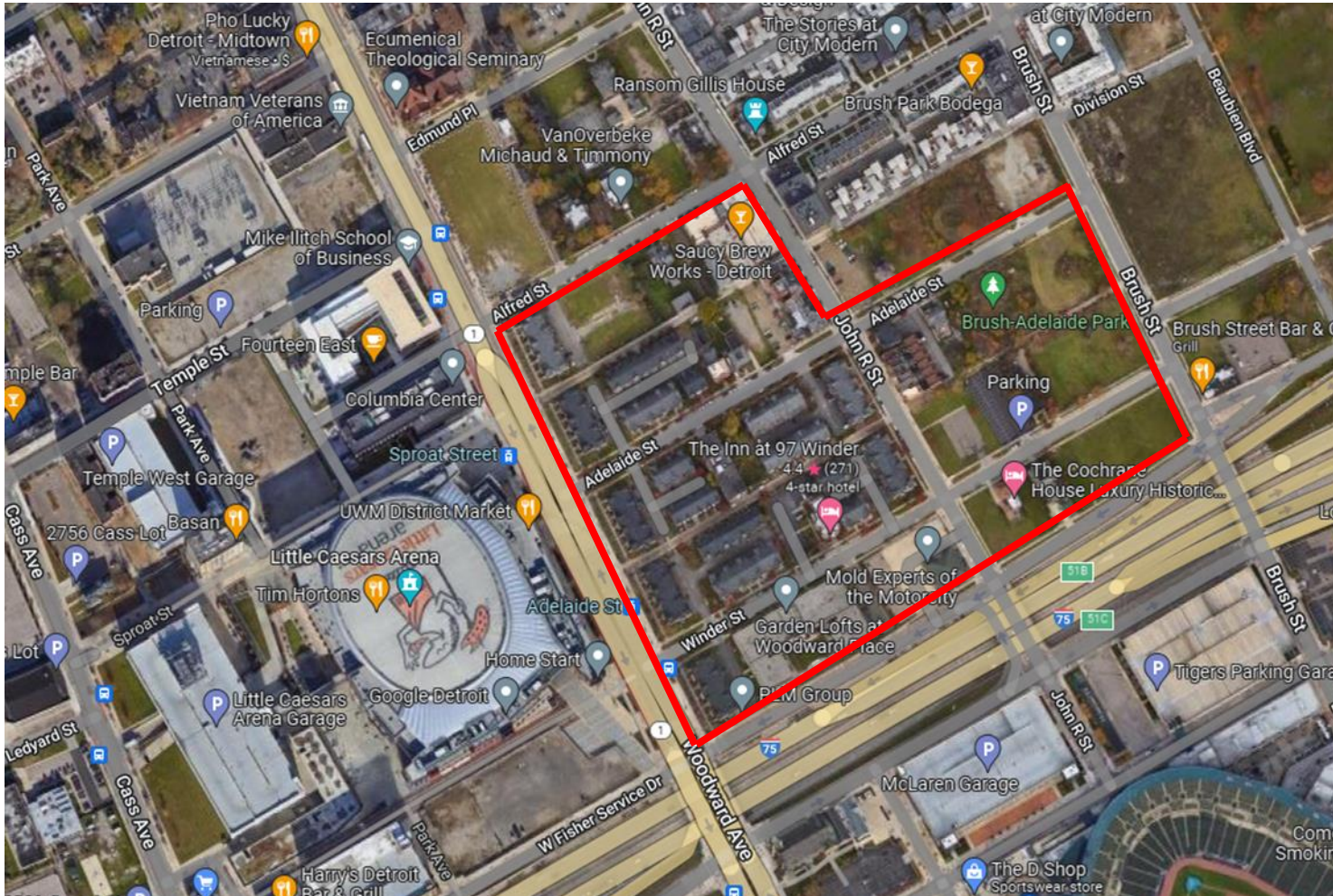
Central Brush Park

Mixed residential/retail/office/commercial w/heavy LCA activity

Northern Brush Park

Mixed residential/retail/commercial/non-profit/organizations/government w/less LCA activity and more WSU/DMC activity

Southern Brush Park - Residential w/heavy LCA activity



- Boundaries
 - Starting point-intersection of Woodward & Fisher Service Drive
 - Woodward to Alfred
 - Alfred to John R
 - John R to Adelaide
 - Adelaide to Brush
 - Brush to Fisher Service Drive
 - Fisher Service Drive to Woodward





Southern Brush Park Neighborhood Makeup

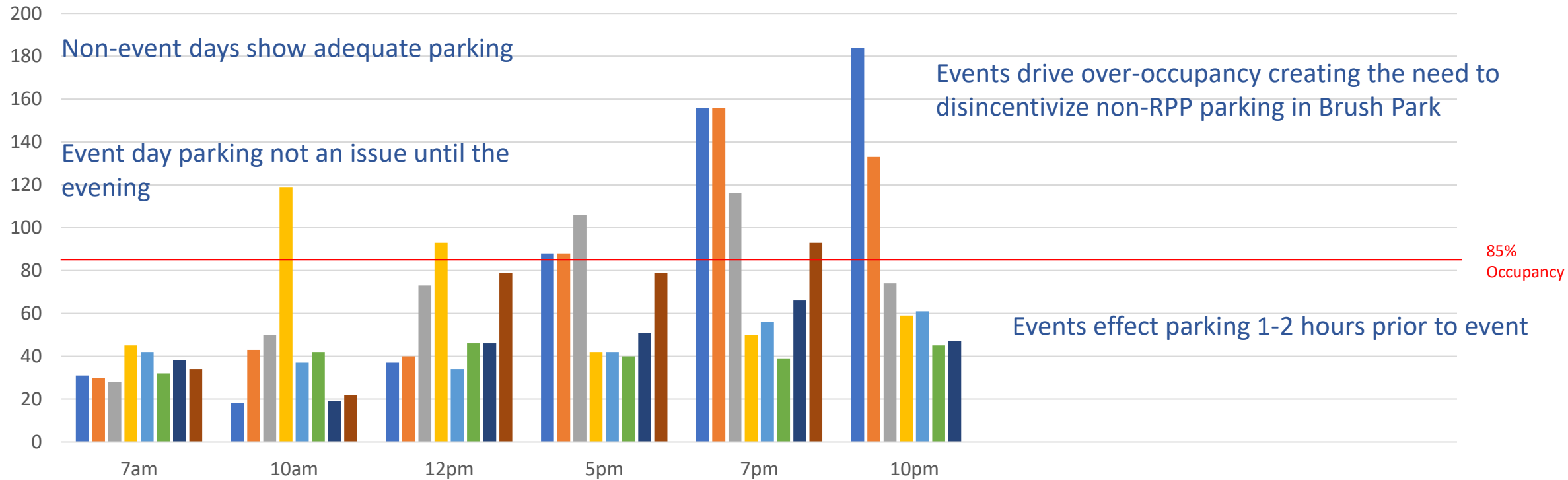


- Residential
 - 2406 – 2462 Woodward – attached garage parking in the rear
 - Garden Lofts at Woodward Place 66 Winder – underground parking
 - 115 – 125 Winder – parking in the rear
 - John R Apartments 2627 John R – gravel parking lot in the rear
 - The Amo Apartments 66 Adelaide – alley access w/ no parking
 - Flats at City Modern – shared parking lot
 - 87 Adelaide – no off-street parking
 - Eubanks Community Living 93 Adelaide – gravel/grass parking lot on the side of the property
 - 71 Adelaide – parking in the rear
 - 2605 John R – parking lot in rear
 - 2546 -2556 John R – detached garage parking in the rear
 - 2572 John R – attached garage parking in the rear
 - 39-67 Adelaide – attached garage parking
 - 2602 – 2626 Woodward – attached garage parking in the rear
 - 2554 – 2552 Woodward – attached garage parking in the rear
 - 82 – 116 Adelaide – attached garage parking in the rear
 - 38 – 1148 Adelaide – attached garage parking in the rear
 - 2541 -2561 John R – attached garage parking in the rear
 - 2505 – 2525 John R – attached garage parking in the rear
 - 2546 -2556 John R – attached garage parking in the rear
 - Horace S. Tarbell House 227 Adelaide –w/no off-street parking
 - 236 Adelaide –w/no off-street parking
- Non-Profit
 - Kingdom Hall of Jehovah’s Witnesses 151 Fisher Service Drive – parking lot
- Commercial
 - The Inn at 97 Winder 97 Winder – parking lot
 - Midway Auto Transport 97 Winder – parking lot
 - Khan Law LLC – minimal parking in the rear
 - The Cochrane House – parking lot
 - 234 Winder Street Inn – parking lot
 - PLM Group – not located at the property
 - Barber shop 2619 John R – no off-street parking (using illegal lot for parking)
 - Mold Experts of Motorcity 132 Winder (@ Kingdom Hall) – parking lot
 - Saucy Brew Works – shared parking lot



Winder (Woodward to Brush)

On-street parking occupancy



LCA: Little Caesars Arena
 FF: Ford Field
 CP: Comerica Park
 FOX: Fox Theatre
 FIL: Filmore Theatre

EVENTS – 6/29/22
 LCA: Dynamite/Rampage 7p
 FOX: Tedeschi Trucks Band 6:30p
 Thursday

EVENTS – 7/1/22
 CP: Tigers vs Royals 7:10p
 Friday

EVENTS-7/2/22
 CP: Tigers vs Royals 4:10p
 LCA: Summer Slam 8p
 Saturday

EVENTS-7/3/22
 CP: Tigers vs Royals 4:10p
 LCA: Summer Slam 8p
 Sunday

EVENTS-7/7/22
 FIL: War on the Catwalk 7p
 Thursday

EVENTS-7/11/22
 No Events
 Monday

EVENTS-7/14/22
 LCA: Kevin Hart 7p
 Thursday

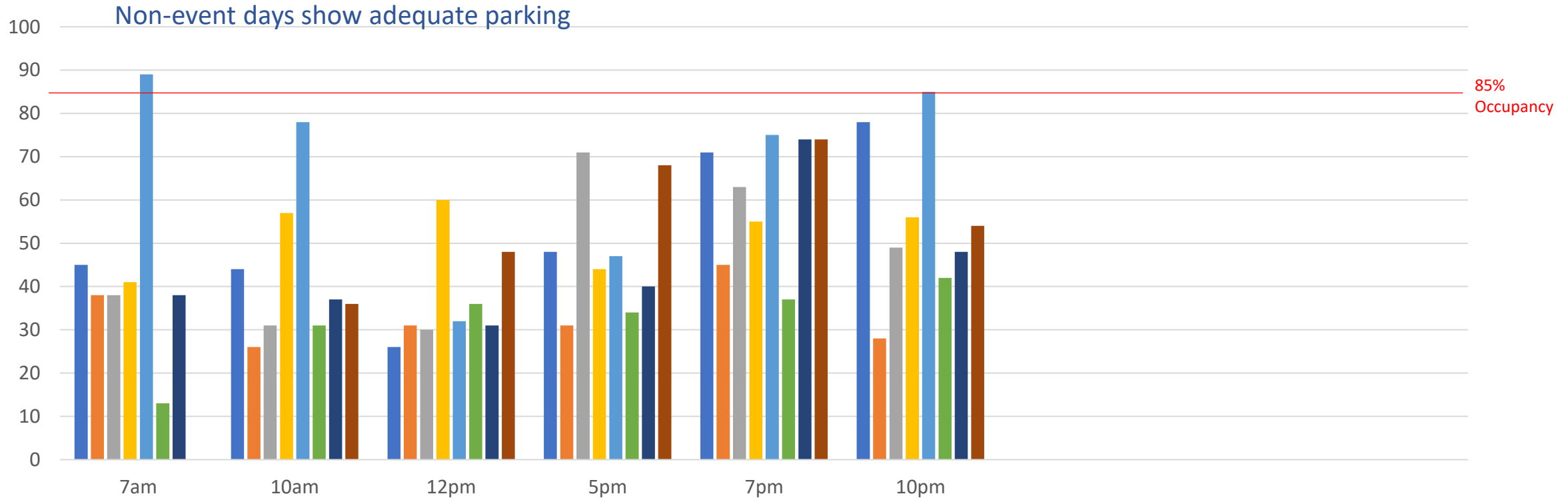
EVENTS-7/18/22
 CP: Elton John 8p
 Filmore: Three Days Grace 6p
 Monday





Adelaide (Woodward to Brush)

On-street parking occupancy



LCA: Little Caesars Arena
 FF: Ford Field
 CP: Comerica Park
 FOX: Fox Theatre

EVENTS – 6/29/22

LCA: Dynamite/Rampage 7p
 FOX: Tedeschi Trucks Band 6:30p
Thursday

EVENTS – 7/1/22

CP: Tigers vs Royals 7:10p
Friday



EVENTS-7/2/22

CP: Tigers vs Royals 4:10p
 LCA: Summer Slam 8p
Saturday



EVENTS-7/3/22

CP: Tigers vs Royals 4:10p
 LCA: Summer Slam 8p
Sunday

EVENTS-7/7/22

FF: War on the Catwalk 7p
Thursday



EVENTS-7/11/22

No Events
Monday

EVENTS-7/14/22

LCA: Kevin Hart 7p
Thursday



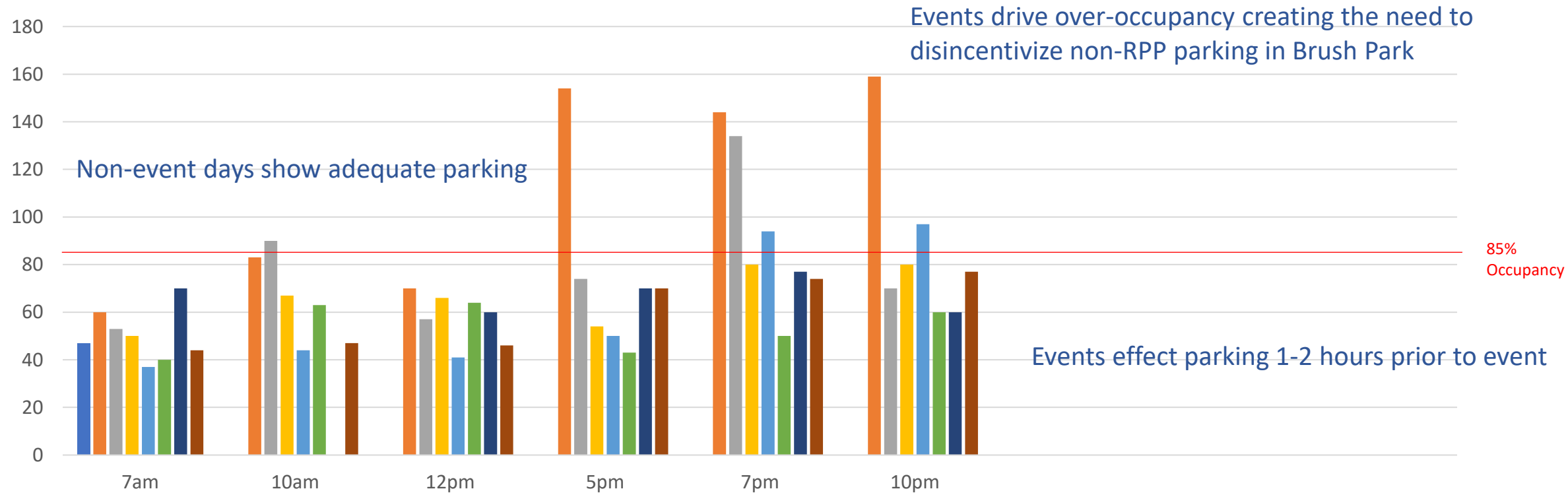
EVENTS-7/18/22

CP: Elton John 8p
 Filmore: Three Days Grace 6p
Monday



John R (Alfred to Winder)

On-street parking occupancy



LCA: Little Caesars Arena
 FF: Ford Field
 CP: Comerica Park
 FOX: Fox Theatre

EVENTS – 6/29/22

LCA: Dynamite/Rampage 7p
 FOX: Tedeschi Trucks Band 6:30p
 Thursday

EVENTS – 7/1/22

CP: Tigers vs Royals 7:10p
 Friday



EVENTS-7/2/22

CP: Tigers vs Royals 4:10p
 LCA: Summer Slam 8p
 Saturday



EVENTS-7/3/22

CP: Tigers vs Royals 4:10p
 LCA: Summer Slam 8p
 Sunday

EVENTS-7/7/22

FF: War on the Catwalk 7p
 Thursday



EVENTS-7/11/22

No Events
 Monday

EVENTS-7/14/22

LCA: Kevin Hart 7p
 Thursday

EVENTS-7/18/22

CP: Elton John 8p
 Filmore: Three Days Grace 6p
 Monday

Southern Brush Park RPP Summary



1) Southern Brush Park on-street occupancy on Winder, John R, and Adelaide is below the 85% during none event occurrences

2) During some events, on-street occupancy on Winder, John R, and Adelaide above 100% facilitating illegal parking and residential hardship

3) Residential parking relief is needed primary during the evening hours

4) Non-residential parking activity related to Brush Park requires specific locations dedicated to support business and reduce illegal parking

The MPD proposed plan will provide residential parking relief, support business activity, and disincentivize non-Brush Park related parking.

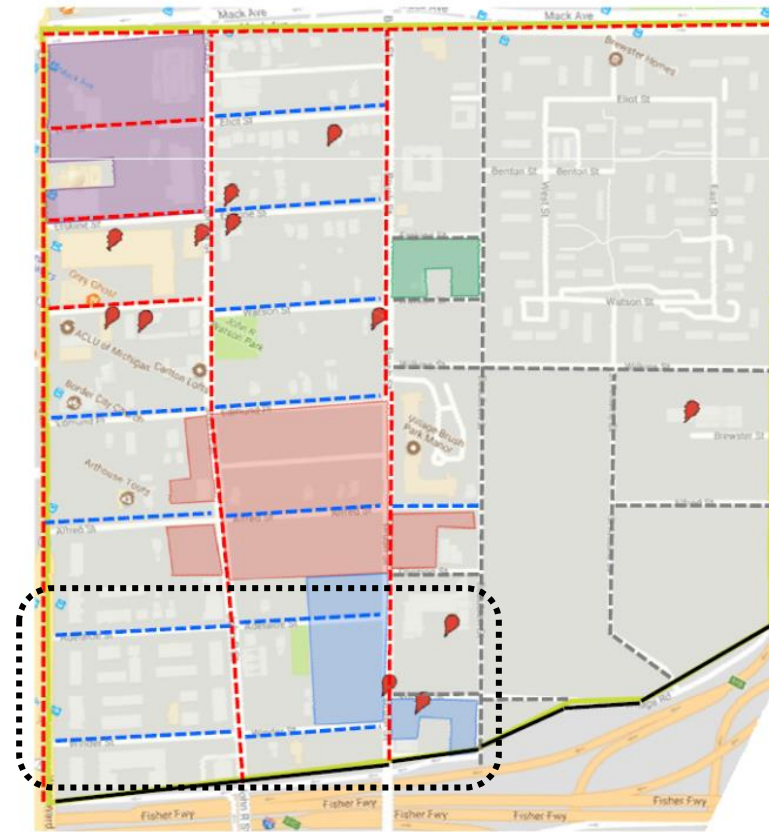


Brush Park CDC Recommendations



BRUSH PARK CDC Neighborhood Parking Recommendations Updated as of 3.7.18

- Recommendations Key**
- Permit Parking
 - Paid Parking Zone
 - No Parking
 - - - - TBD



The highlighted areas and markers represent development projects proposed or currently underway in Brush Park.

For information on the development projects noted on this map, please visit our website at BrushParkCDC.org

Meeting Focus Area



Residential Parking Plan –Erskine/Eliot Streets (Brush Park) Area #3



- Residential Parking —
- Meter Parking —
- No Parking —
- Non- Meter Parking —
- Private Lots Private Lots
- Existing Meters —
- Public Transit Stop —
- Future RPP Parking - - -
- Residential Meter Parking —
- Residential Groups
- Municipal Parking —



MPD Brush Park RPP Plan Rationale for Southern Brush Park



- Residents have protected parking
 - Winder, Adelaide, John R (Alfred to Winder additional beyond Brush Park RPP suggestion)
 - Other Brush Park residents are unable to use the available space in Southern Brush Park
- Retail, commercial, and professional activity parking supported
 - All non-residential parking activity contained to designated non-residential areas
 - Introduction of meters supports parking turnover in commercial areas to support businesses
- Non-Southern Brush Park parking disincentivized
 - MPD will enforce violators
 - Non-Residential Permit holders
 - Meter violators

Time Period Sign Only Residential Parking Zone

Zone 411, 412,
413, 414, 415,
416, 417 Signs

- Two vehicles per permit will be allowed to be registered
- 30 annual visitor passes
- Potentially up to 3 caregiver passes
- Car Rental passes based on visitor pass availability

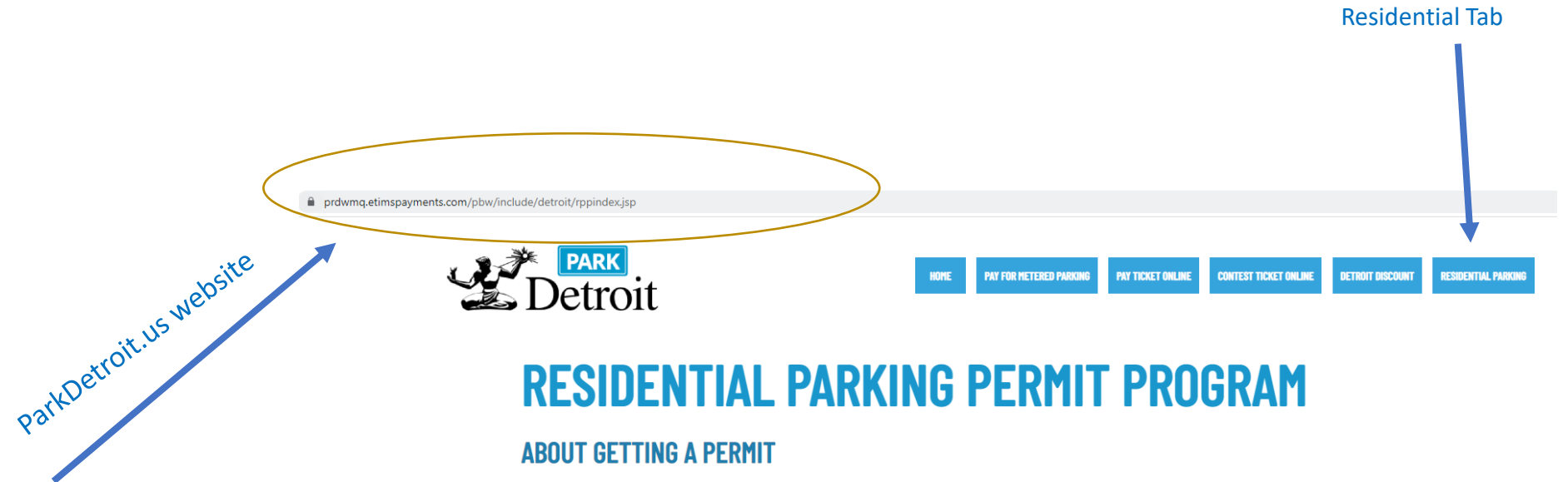


Residential permit holders park
24hrs every day

Non-Residential permit holders
can park between 8am to 4pm



Residential Parking Permit Access



<https://prdwmq.etimspayments.com/pbw/include/detroit/rppindex.jsp>



Comments or Questions

1 minute maximum per speaker please



