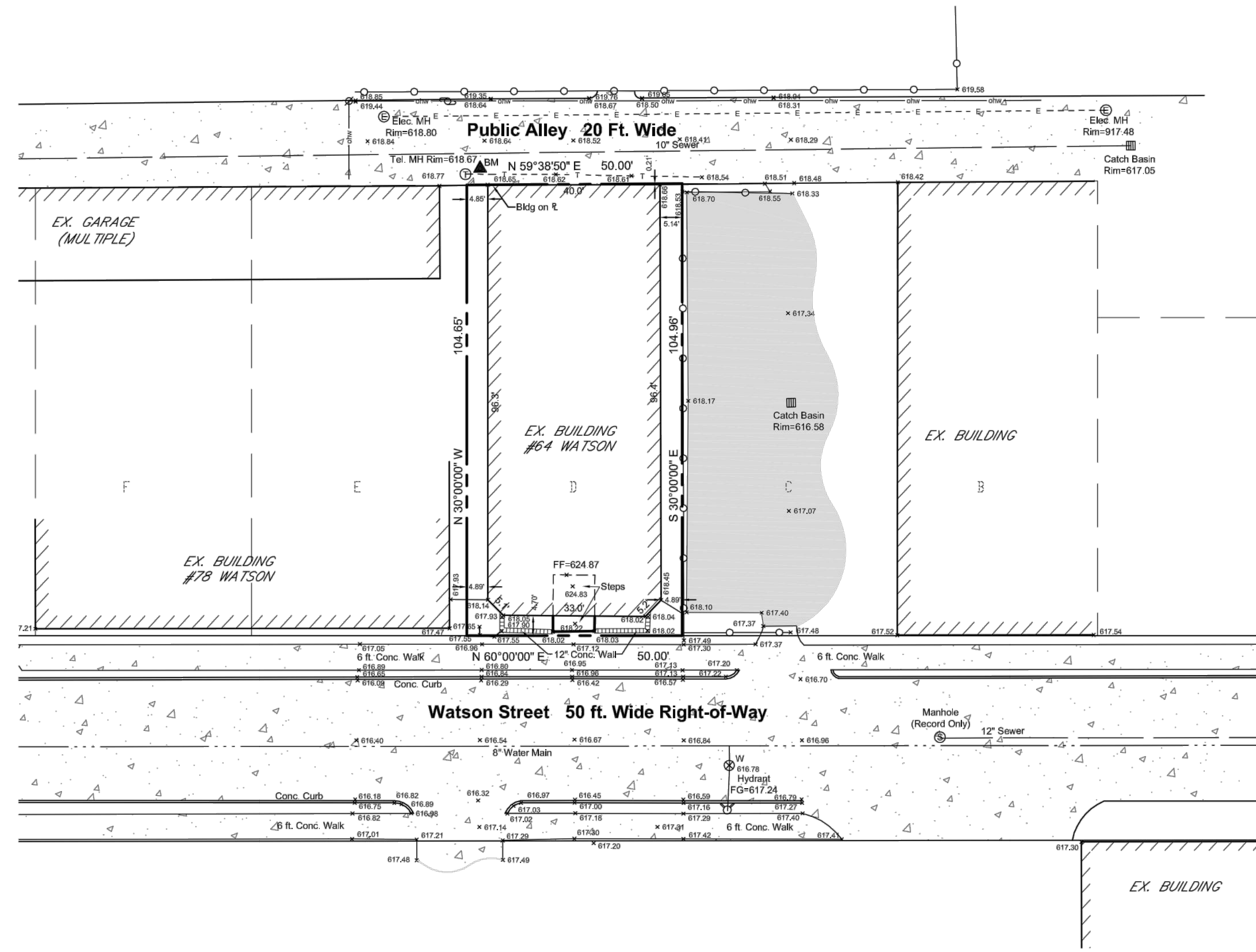


location map



legal description

Lot D, "Parson's Estate Sub'n" of Lot 4 & Nly 43 ft. of Lot 3, Brush's Sub'n., of part of Park Lots 14, 15, 16 & 17, City of Detroit, Michigan", as recorded in Liber 23 of Plats, Page 13, Wayne County Records.

zoning

Per City Zoning Map, the subject site is zoned "R3-Low Density Residential"

benchmark

Telephone man hole rim located 5'± south of the SE property corner. Elevation = 618.67 (NAVD 88)

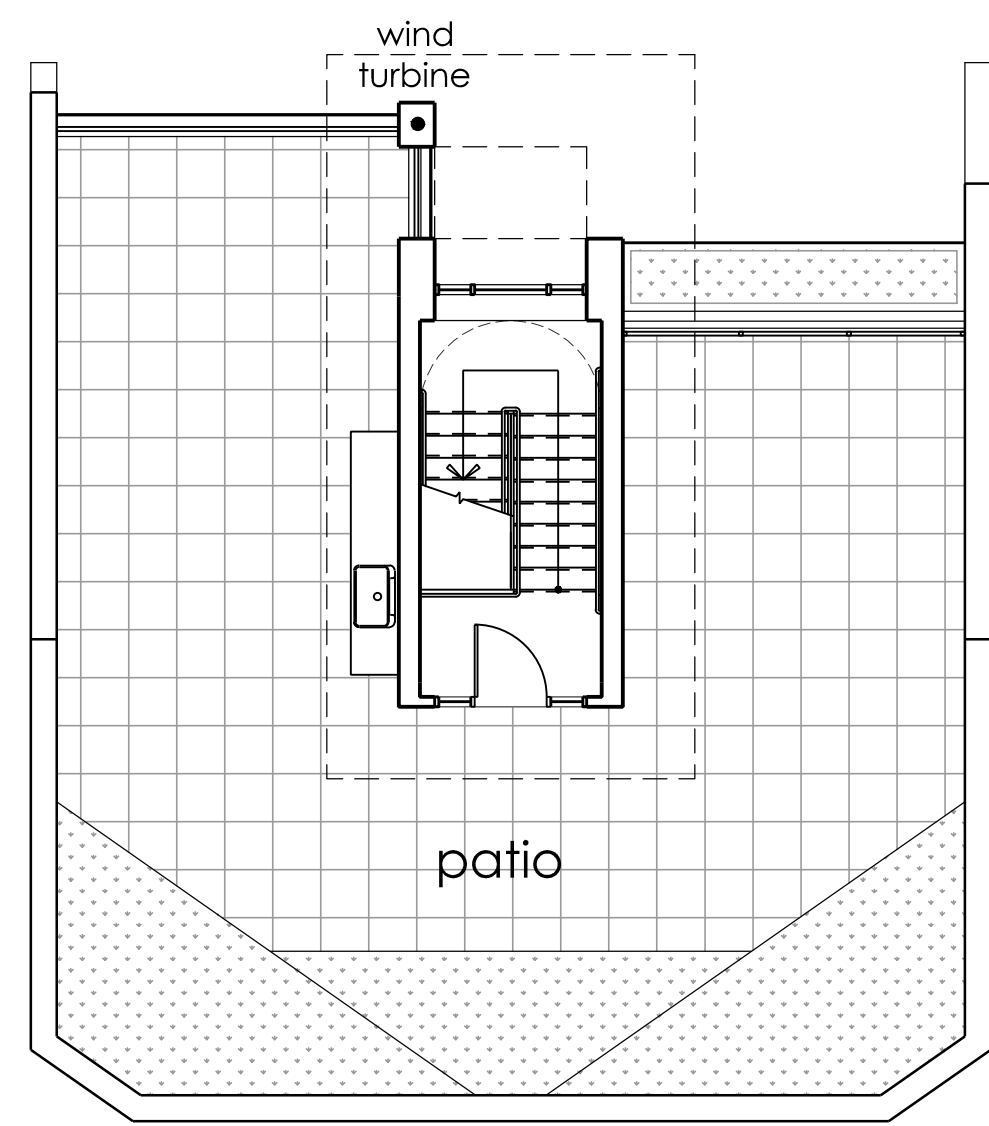
Legend

- GOVERNMENT CORNER
- CONCRETE MONUMENT
- SET STEEL STAKE
- FOUND IRON ROD
- ▲ BENCH MARK
- ⊞ CATCHBASIN
- ⊞ STORM MANHOLE
- ⊞ SANITARY MANHOLE
- ⊞ TELEPHONE MANHOLE
- ⊞ ELECTRIC MANHOLE
- ⊞ WATER SHUT OFF VALVE
- ⊞ WATER GATE VALVE & WELL
- ⊞ FIRE HYDRANT
- ⊞ GAS VALVE
- ⊞ ELECTRIC TRANSFORMER PAD
- ⊞ LIGHT POLE
- ⊞ POWER/TEL POLE
- ⊞ GUY ANCHOR
- ⊞ METAL POST
- ⊞ SIGN
- DECIDUOUS TREE
- ★ CONIFEROUS TREE
- PLANTING ROW
- SANITARY SEWER
- STORM SEWER
- WATER MAIN
- GAS MAIN
- OVERHEAD WRES
- WOOD FENCE
- UNDERGROUND ELECTRIC SERVICE
- UNDERGROUND TELEPHONE SERVICE
- ASPHALT PAVEMENT
- CONCRETE PAVEMENT

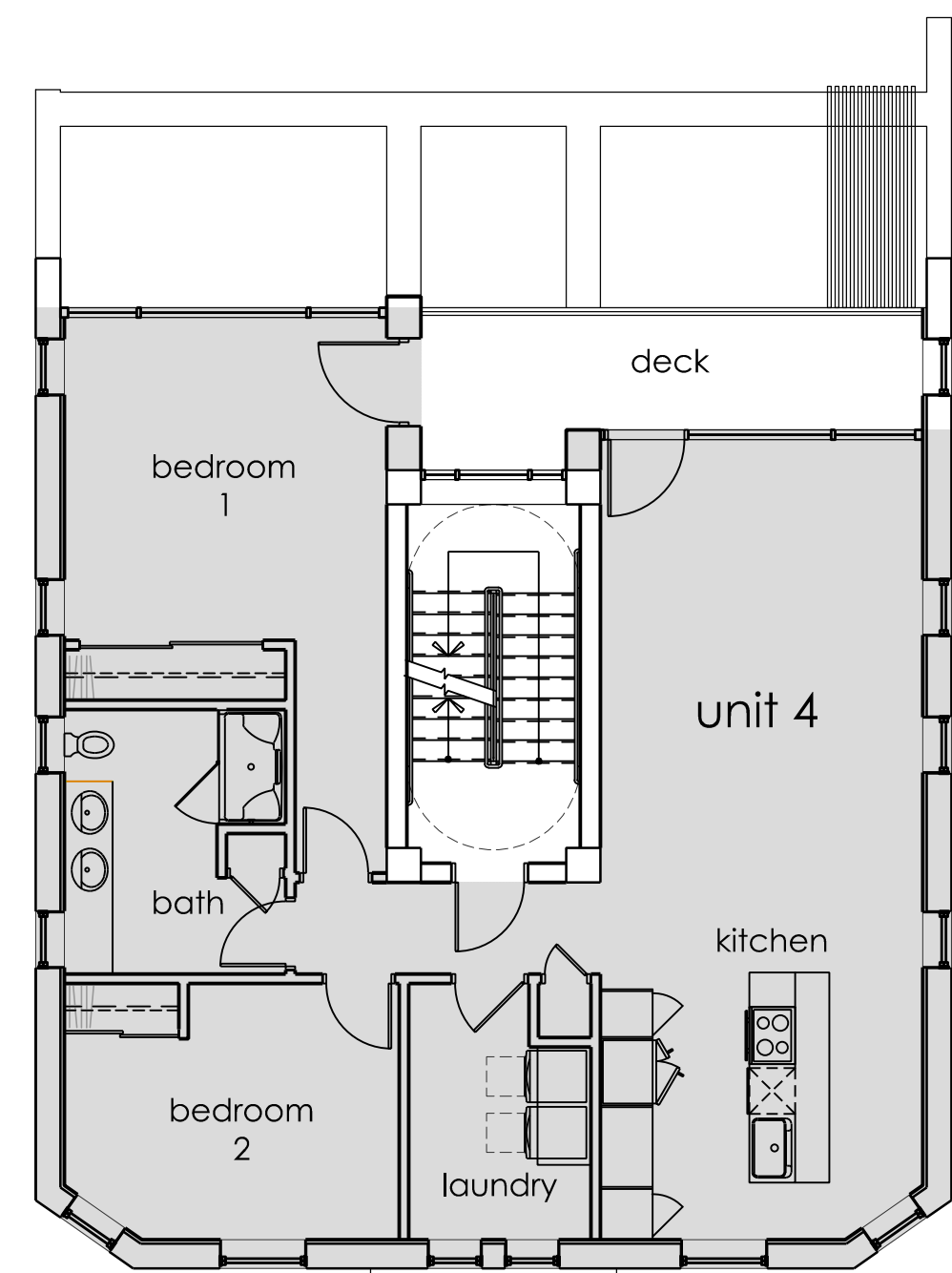
**note**  
 Underground utilities as shown indicate approximate locations of facilities only, as disclosed by the municipal records and of the various utility companies and no warranty is given either as to completeness or accuracy thereof. Visible surface or above surface utilities have been field located, where possible. No information is available as to their depth, however, generally gas mains and telephone/electric underground have a 36" to 42" cover, but must be verified through MISS DIG prior to construction.  
 There may be encumbrances upon the subject site that would be revealed in a title commitment. Any plottable encumbrances will be added upon receipt of a current title commitment.

# 64 Watson

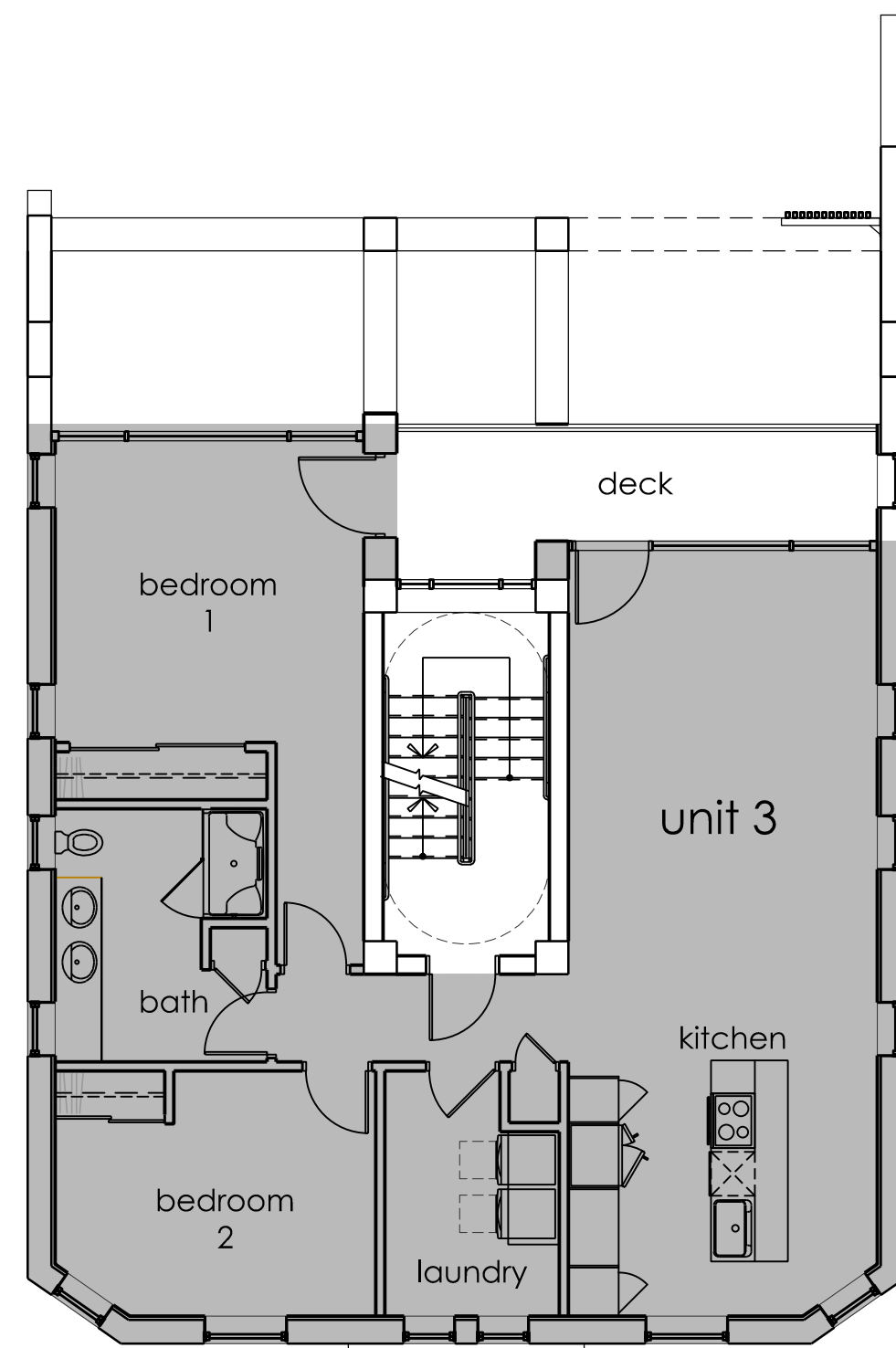
## The Devon Building



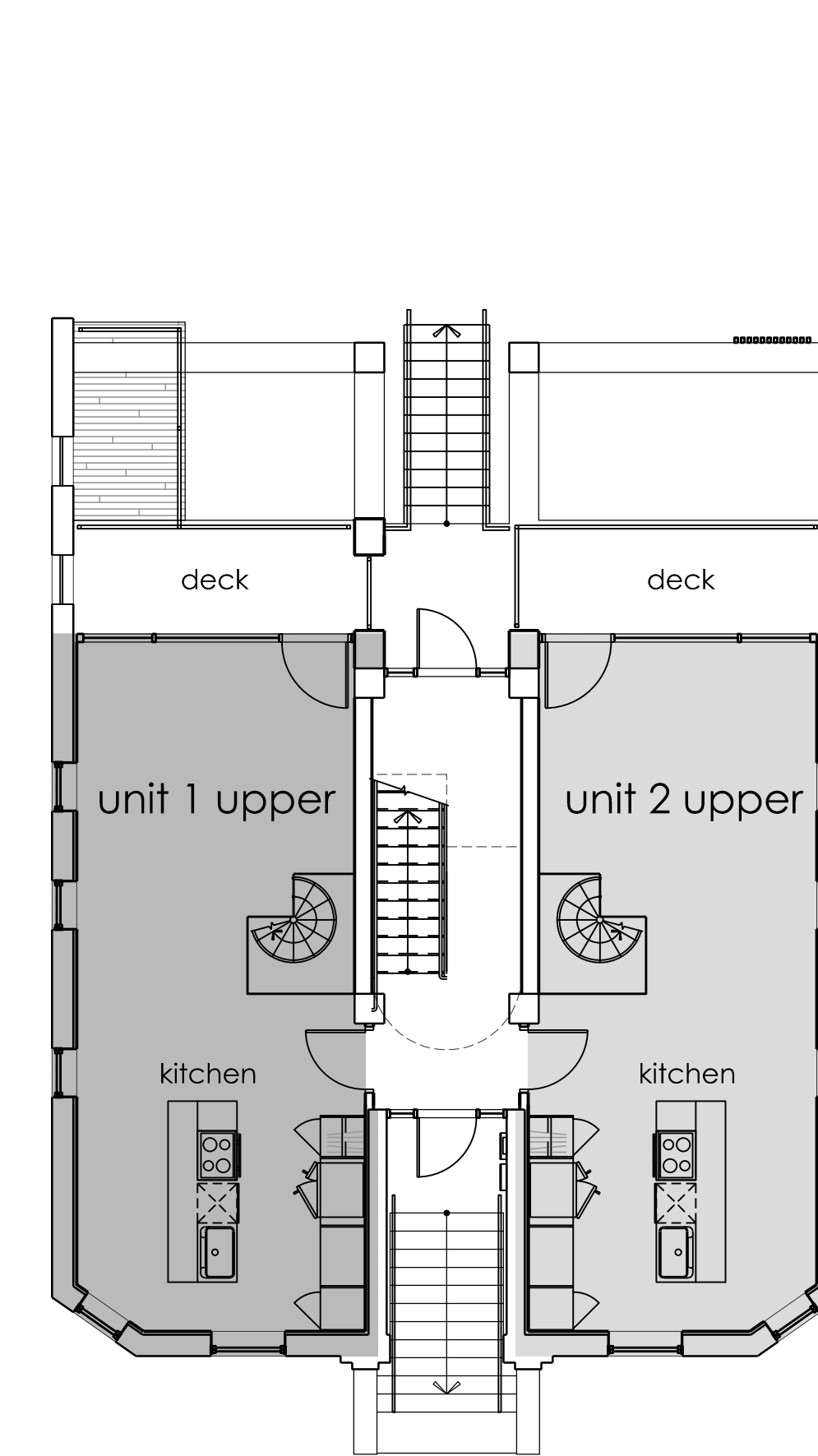
roof



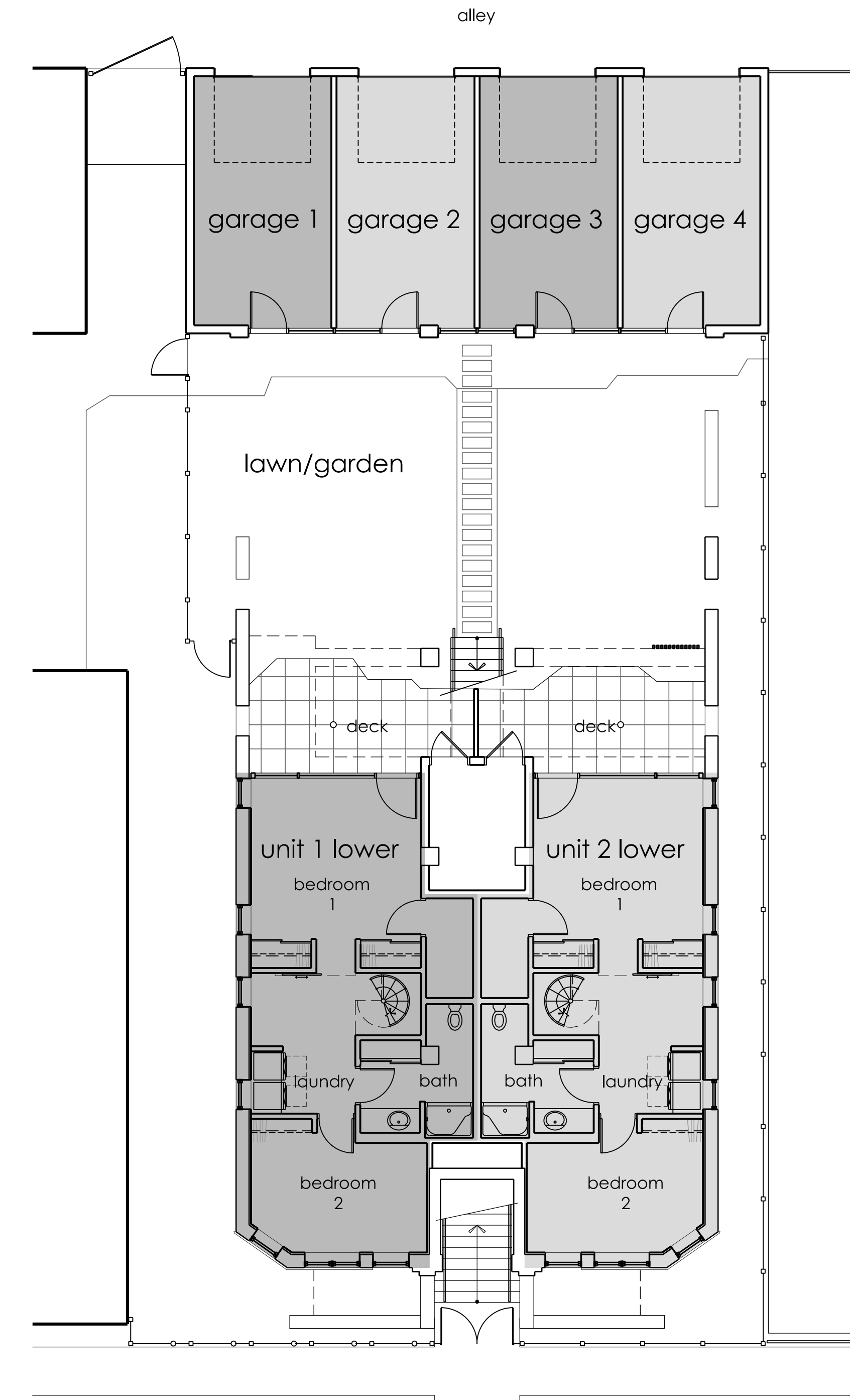
floor 3



floor 2



floor 1



street

# 64 watson

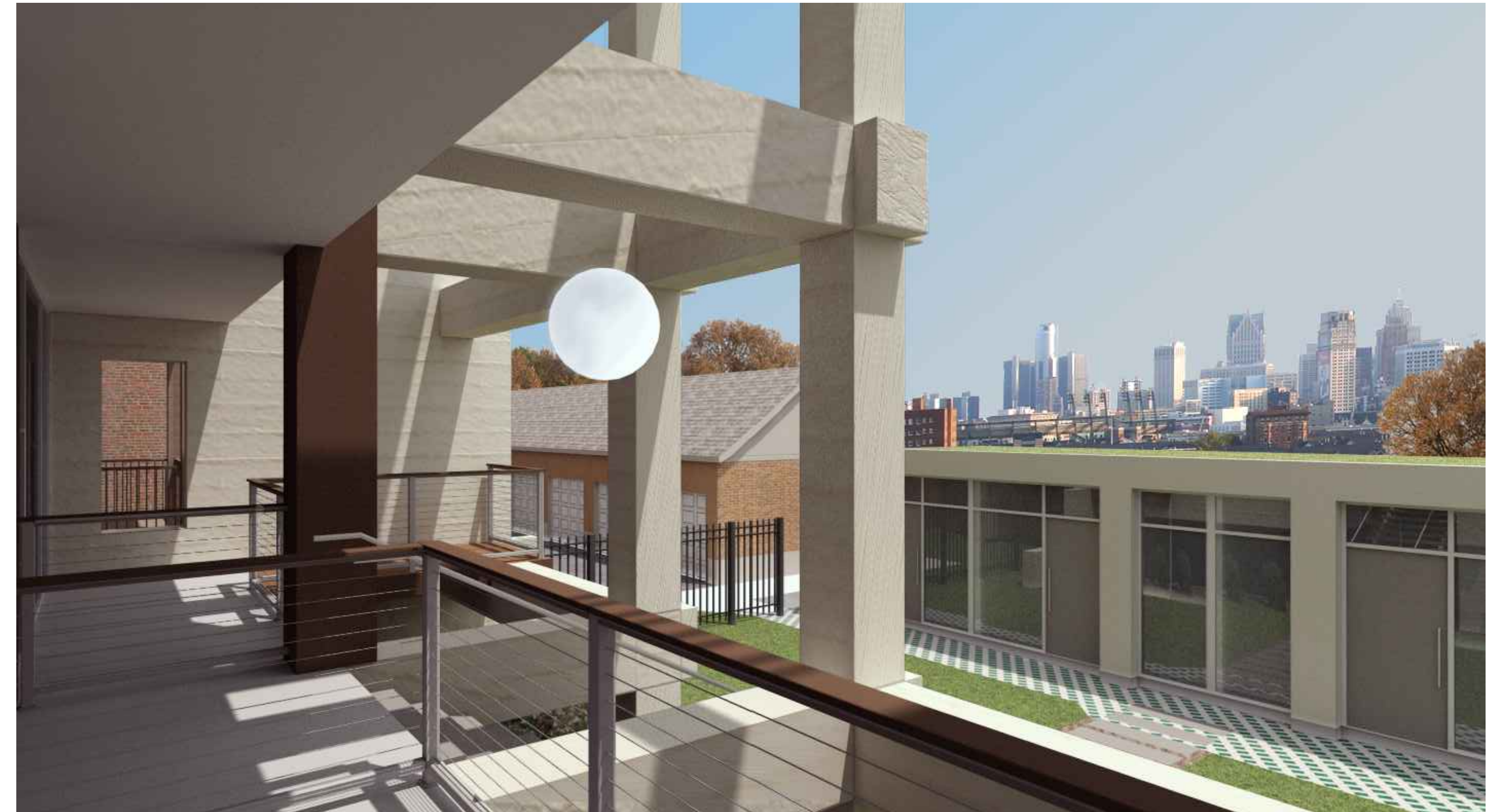
The Devon Building



view from alley



view from watson street



view from balcony

# 64 Watson

The Devon Building