

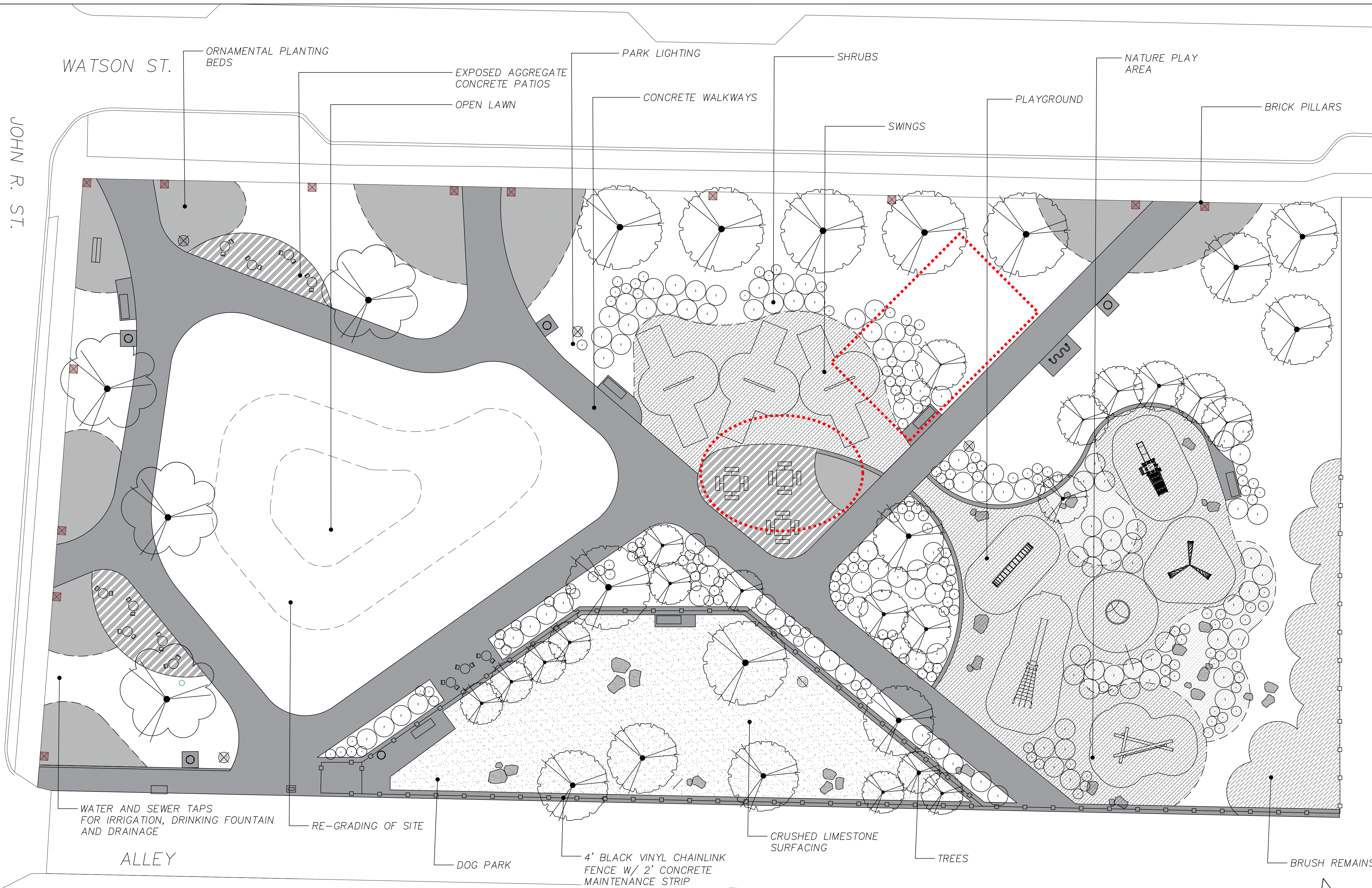


GENERAL SERVICES DEPARTMENT
LANDSCAPE DESIGN UNIT
 115 ERSKINE ST, DETROIT MI 48201
 PH: (313) 628-0900 FAX: (313) 628-0927

PROJECT NAME:	
JOHN R. WATSON PARK	
DRAWN: JD	APPROVED:
CHECKED:	DATE
ISSUED FOR	6/14/2022

SHEET TITLE:
MASTERPLAN

FOR FILE PROJ #: PROP #: DIST #:	SHEET 3
---	-------------------



WATSON ST.

JOHN R. ST.

ORNAMENTAL PLANTING BEDS

EXPOSED AGGREGATE CONCRETE PATIOS

OPEN LAWN

PARK LIGHTING

CONCRETE WALKWAYS

SHRUBS

SWINGS

PLAYGROUND

NATURE PLAY AREA

BRICK PILLARS

WATER AND SEWER TAPS FOR IRRIGATION, DRINKING FOUNTAIN AND DRAINAGE

RE-GRADING OF SITE

DOG PARK

4' BLACK VINYL CHAINLINK FENCE W/ 2' CONCRETE MAINTENANCE STRIP

CRUSHED LIMESTONE SURFACING

TREES

BRUSH REMAINS

ALLEY

